



closed canopy forest

# False-brome Control

OSU McDonald-Dunn Forest

Debbie Johnson  
Applegate Forestry LLC



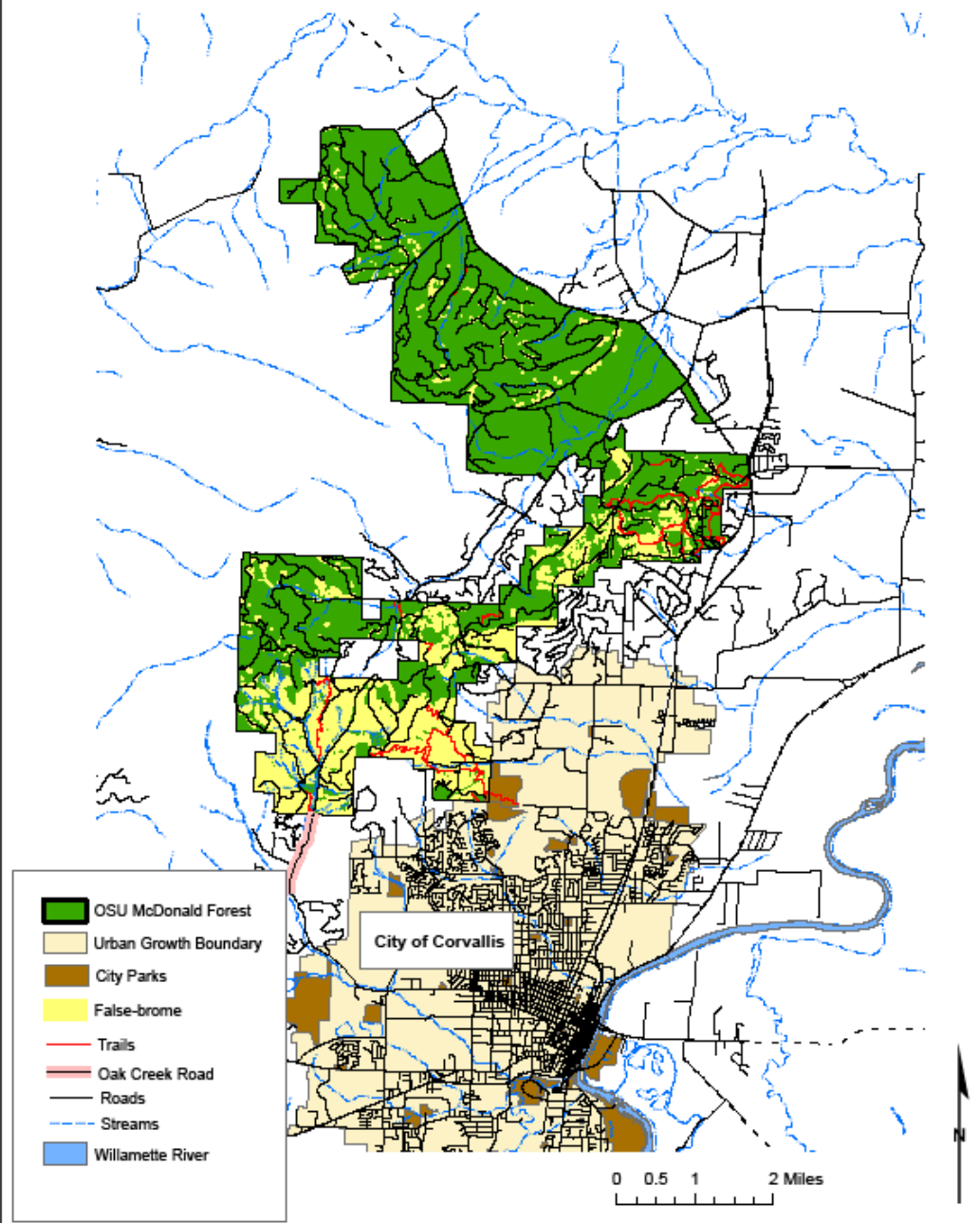
meadow



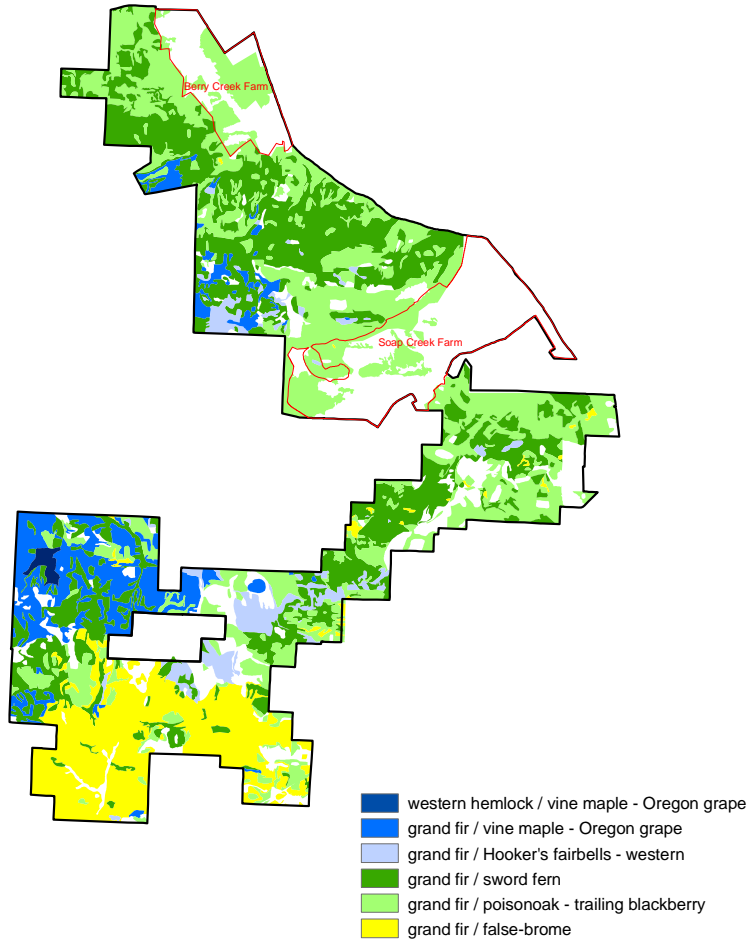
Figure 3.

# McDonald-Dunn Forest

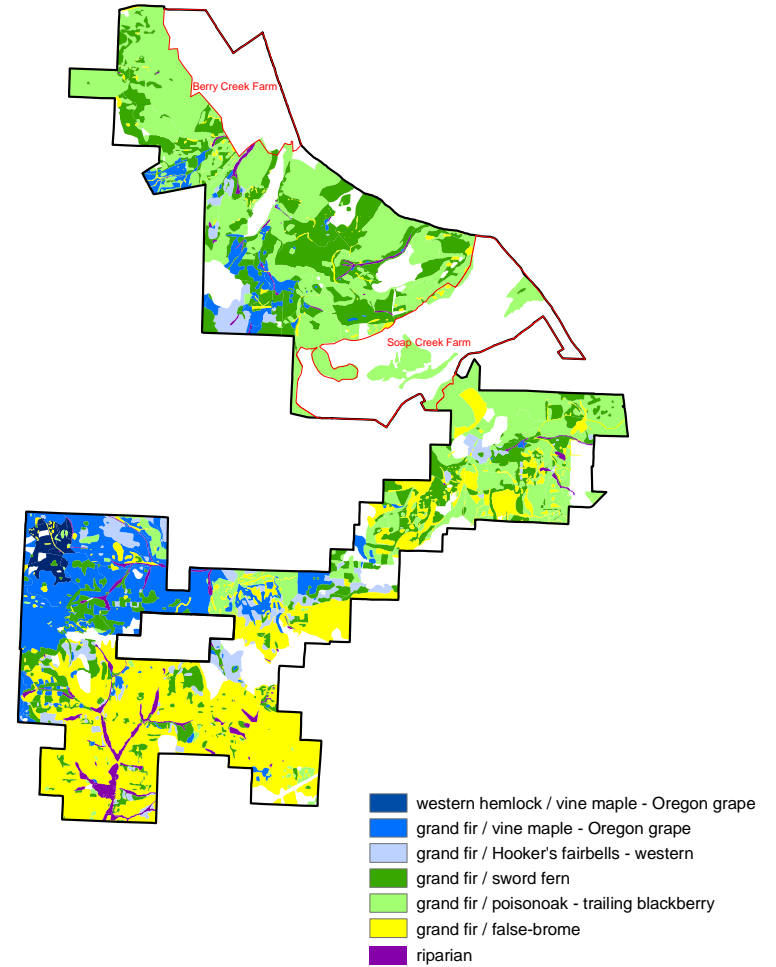
Oregon State University – College Forests



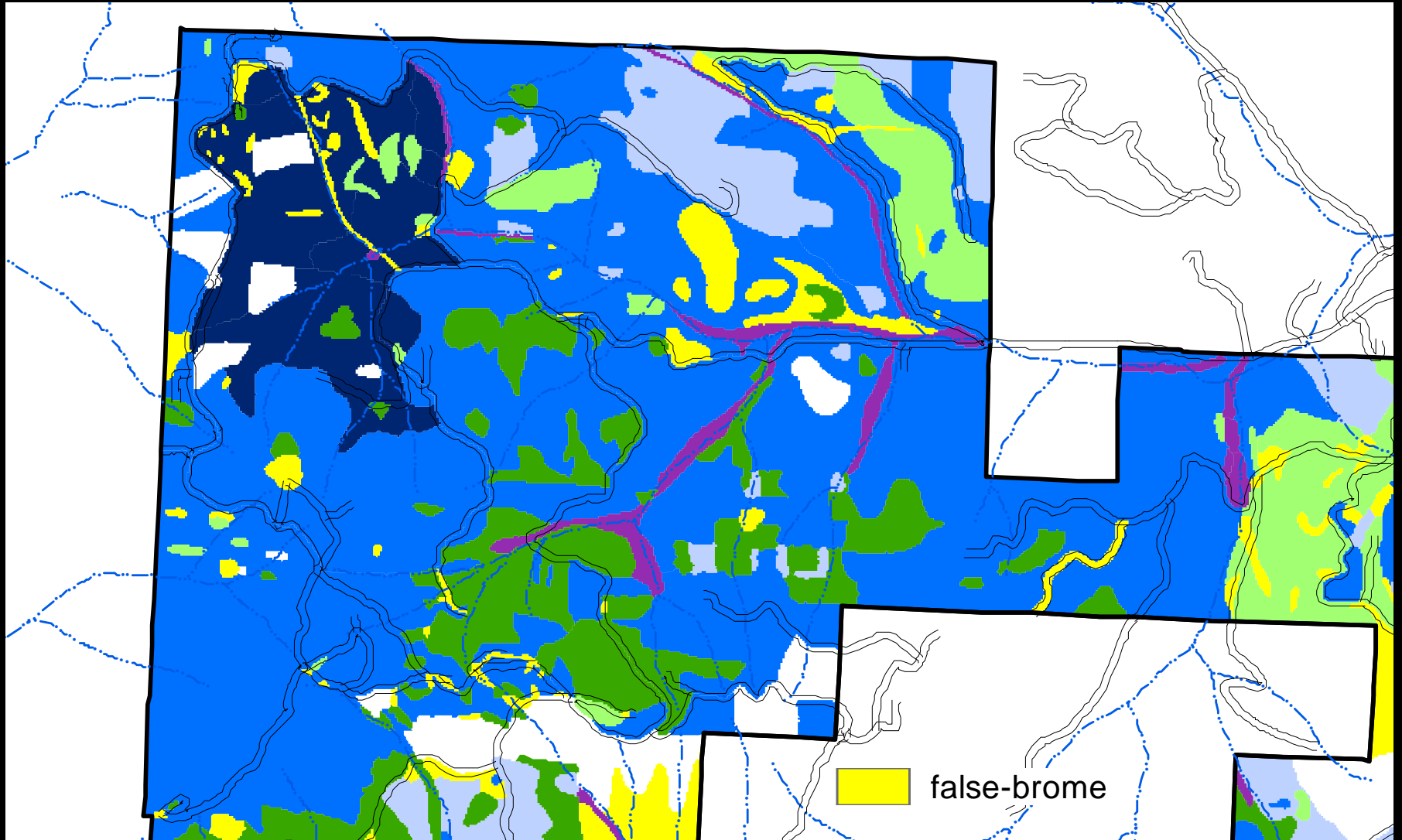
## 1993 Plant Associations



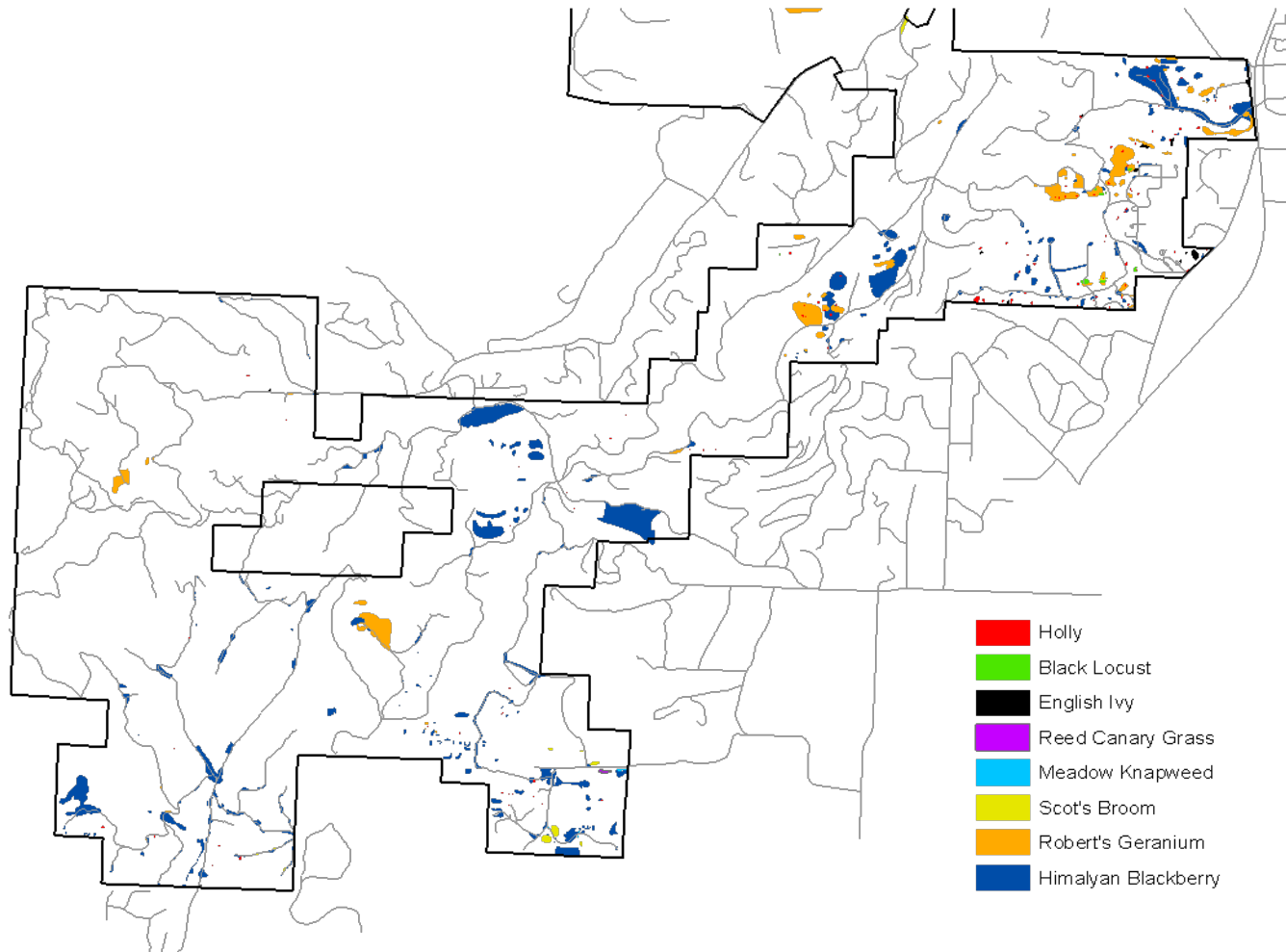
## 2006 Plant Associations



# Soap Creek



# Priority Species – McDonald Forest



# False-brome Management Plan (excerpt)

## Background

False-brome is native to Europe and is believed to have been first introduced to North America in Oregon in the 1930'; one of the earliest introductions was on the McDonald Forest. It has spread to other parts of Oregon, from the initial introduction sites and has also been reported in California. It has a very broad ecological amplitude, thriving in both full sunshine and deep shade and on elevations ranging from 500' to 2500'. Once established it can out compete native vegetation.

## Survey Design

Forest-wide on permanent transects (repeat of 1993 survey method)

## Containment

1. Reduce the amount of seed leaving the forest
2. Reduce the amount of false-brome in seed when logging occurs
3. Reduce the amount of seeds spread by recreationists
4. Reduce the amount of seeds spread by staff

## Control

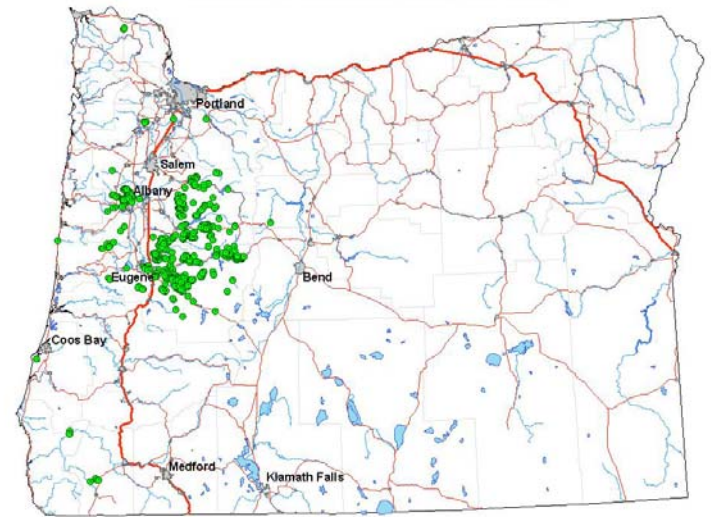
1. Treat post-harvest for three years in clearcut units
2. Eliminate isolated populations
3. Eliminate populations in and around special ecological areas

## Education

1. Expand on Oak Creek kiosk interpretation; add boot-washer
2. Interpret road and trailside treatment project
3. Hold periodic field trips

## Monitoring

1. Measure plots in control treatment areas
2. Remeasure forest-wide survey every 10 years



Current distribution



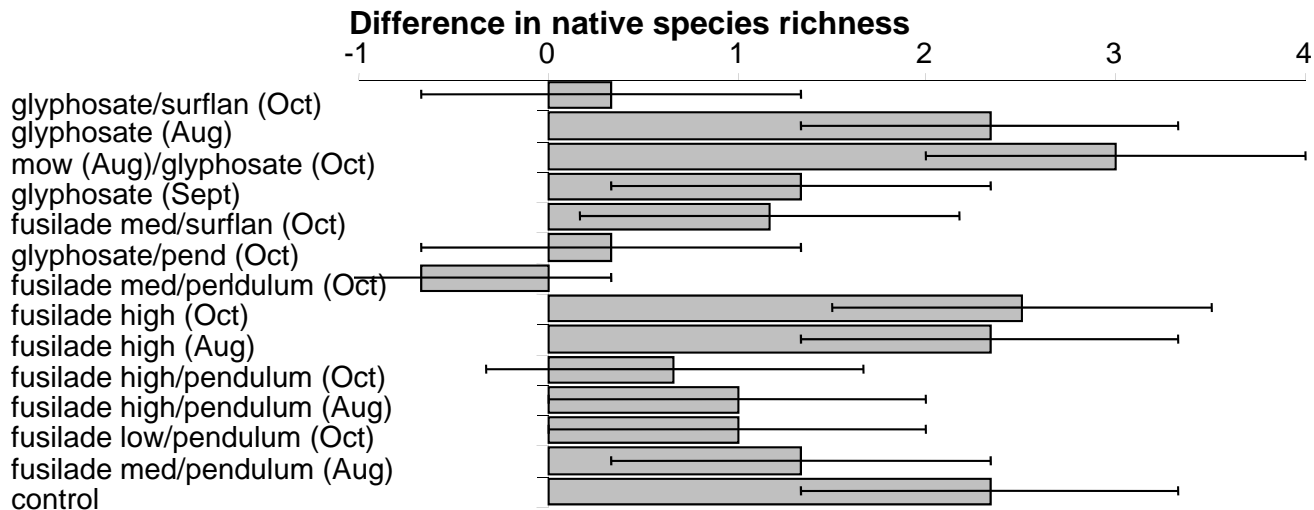
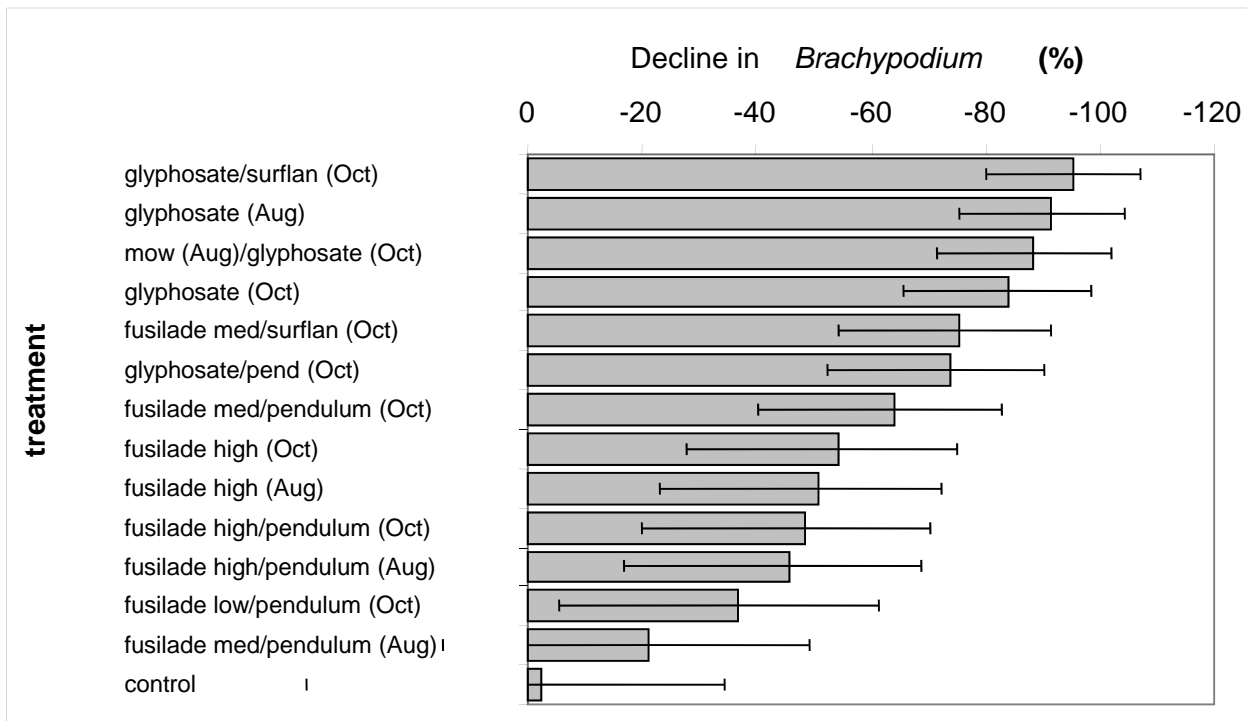
Plant



Infestation

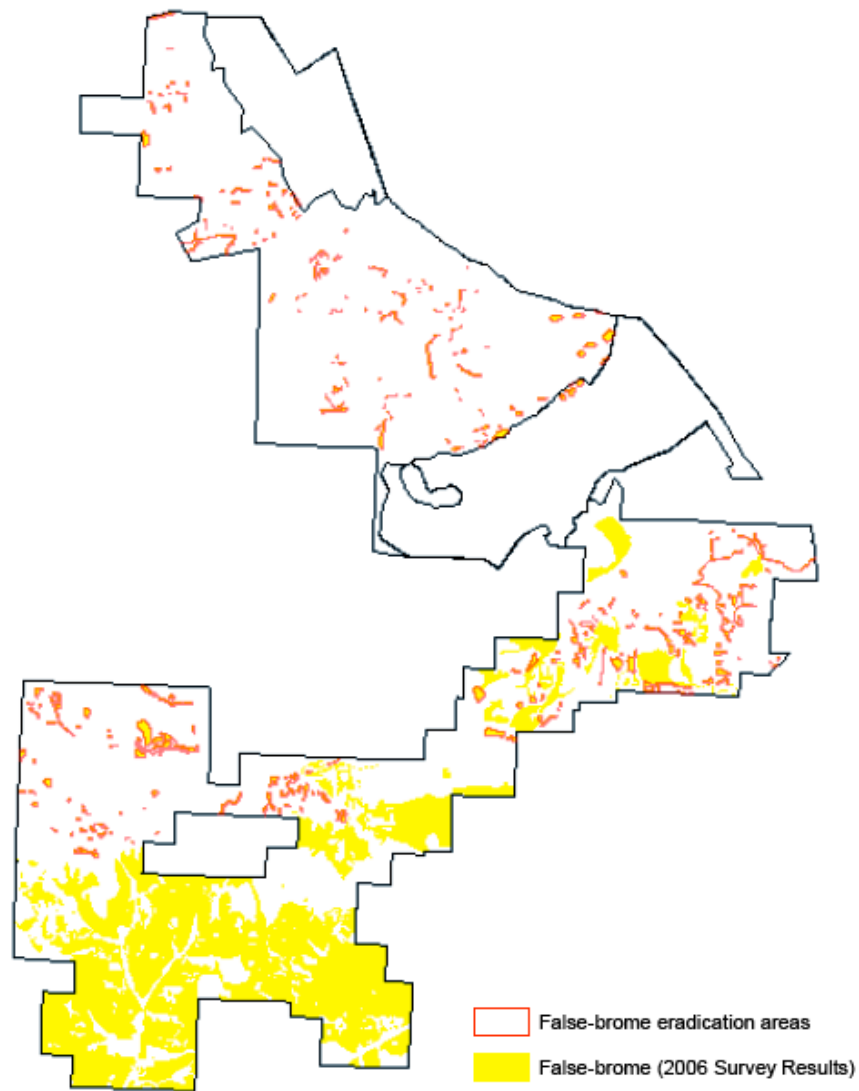
Species	Mechanical	Chemical	IPM	Notes/Tips
<b>False Brome</b>	<p>-Mowing, burning, grazing (maybe) can be used to remove/deplete annual seed production.</p> <p>-Mow any time in June and the plants should not resprout and produce seed that year. (Mow in May and false-brome resprouts. Mow after July, you will spread false-brome everywhere you go.) Lay down mulch (clean weed free straw) after mowing to supress false-brome for one additional year.</p> <p>-Hand pull small patches in April and early May.</p>	<p>Fall  <b>Glyphosate 2 % gal + oryzalin @ 3.3% + non-ionic or MSO/silicon blend surfactant ½ %</b></p>	<p>-To reduce the amount of herbicide used, mow for several years to eliminate soil seed bank. Then after 3 years, treat with herbicide.</p> <p>-Fall          Glyphosate 2 % gal          June – mow          Fall – repeat glyphosate          June – mow          Fall – repeat glyphosate</p>	<p>False brome is spreading fast. Slow the spread by making sure clothing and equipment are free of seeds before you leave an infested site.</p>







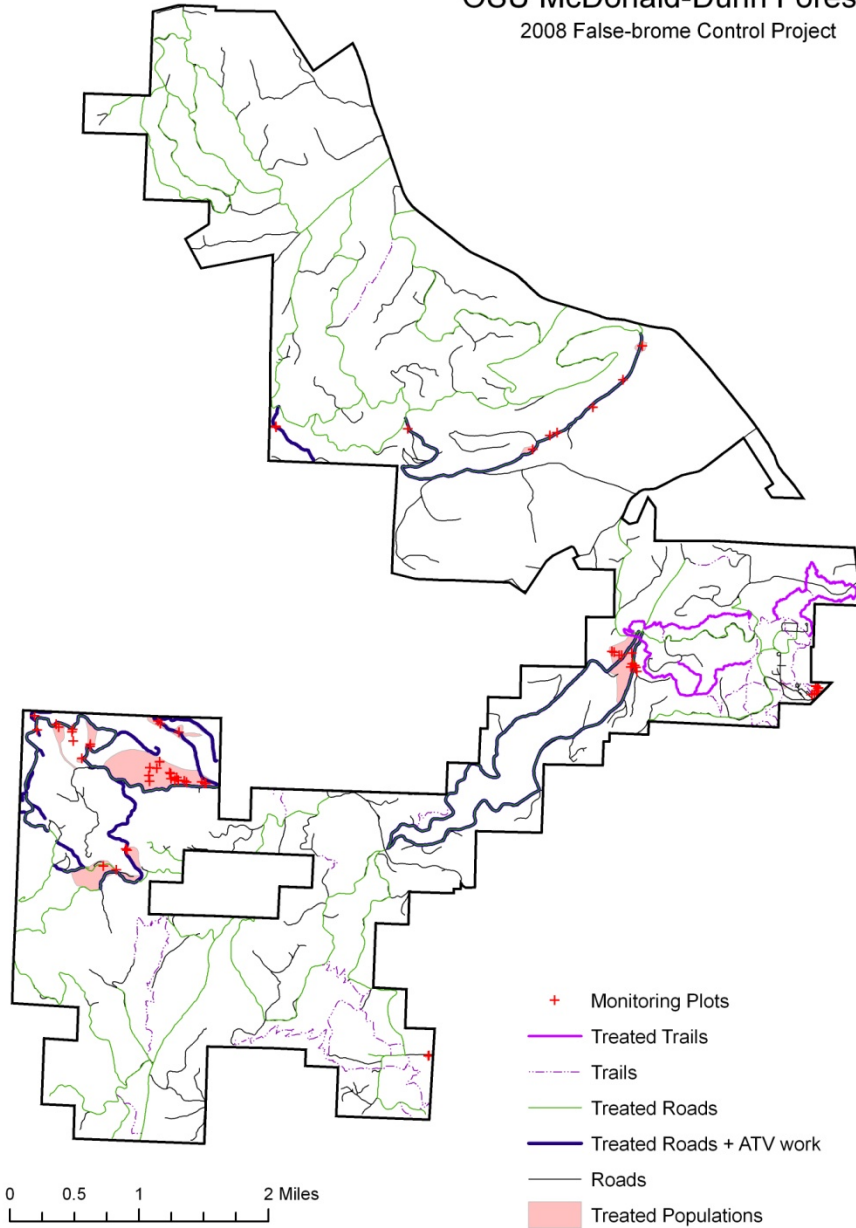
# False-brome Control Project



0 2,500 5,000 10,000 Feet

# OSU McDonald-Dunn Forest

2008 False-brome Control Project









False-brome in a recently thinned stand



**False-brome in a young free-to-grow plantation**

# Containment



Oak Creek Boot and Bike Washing Station