

Expanding Seeds of Success to Build a Sustainable Seed Network in the Eastern United States



Shanyn Siegel, Communications Coordinator

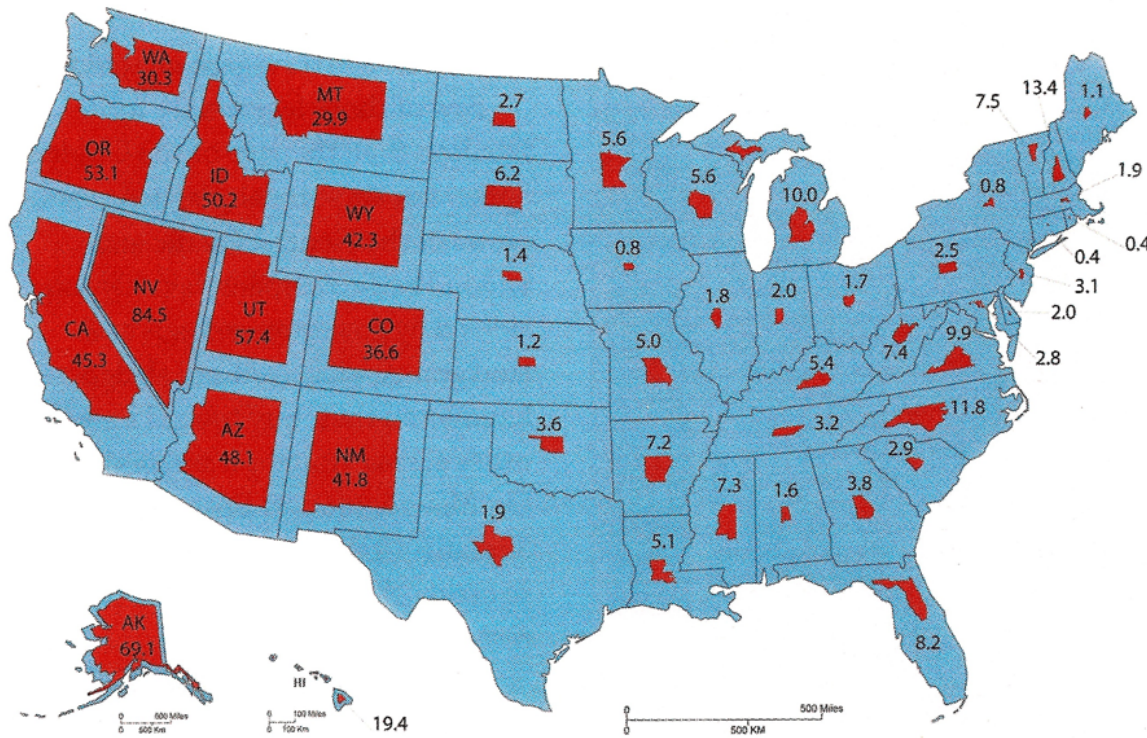


Commercial shortages of genetically-appropriate native plants and seeds are common in the Eastern United States and are a recurring obstacle to ecological restoration.



East vs. West

Federal Land as a Percentage of Total State Land Area



Data source: U.S. General Services Administration, *Federal Real Property Profile 2004*, excludes trust properties.

Toolkit

- Assessment tools
- Model for cooperative seed collection
- Growing database of native seed users and producers

Land Management in the East

- State and Local Governments
 - Departments of Transportation
 - Natural Heritage Programs
 - Departments of Environmental Protection/Conservation
 - State Parks
 - Municipalities
- Commercial Businesses
 - Utility and Water Companies
 - Land Restoration Companies
 - Landscape Architects
 - Mitigation Banks
 - Forestry Professionals
- NGOs
 - Water Quality/Watershed Protection Groups
 - Land Trusts
 - Land and Wildlife Habitat Conservation Groups
- Federal Government
 - USFS
 - USFW
 - Dept of Defense

Understanding Native Plant Need and Use

Identify and assess current needs and concerns regarding genetically appropriate native plant material development and current native plant material availability in the Eastern US.

Understanding Native Plant Need and Use

Characterize Native Plant Users

- sense of scale
- assess level of understanding NPMD and genetically-appropriate native plants

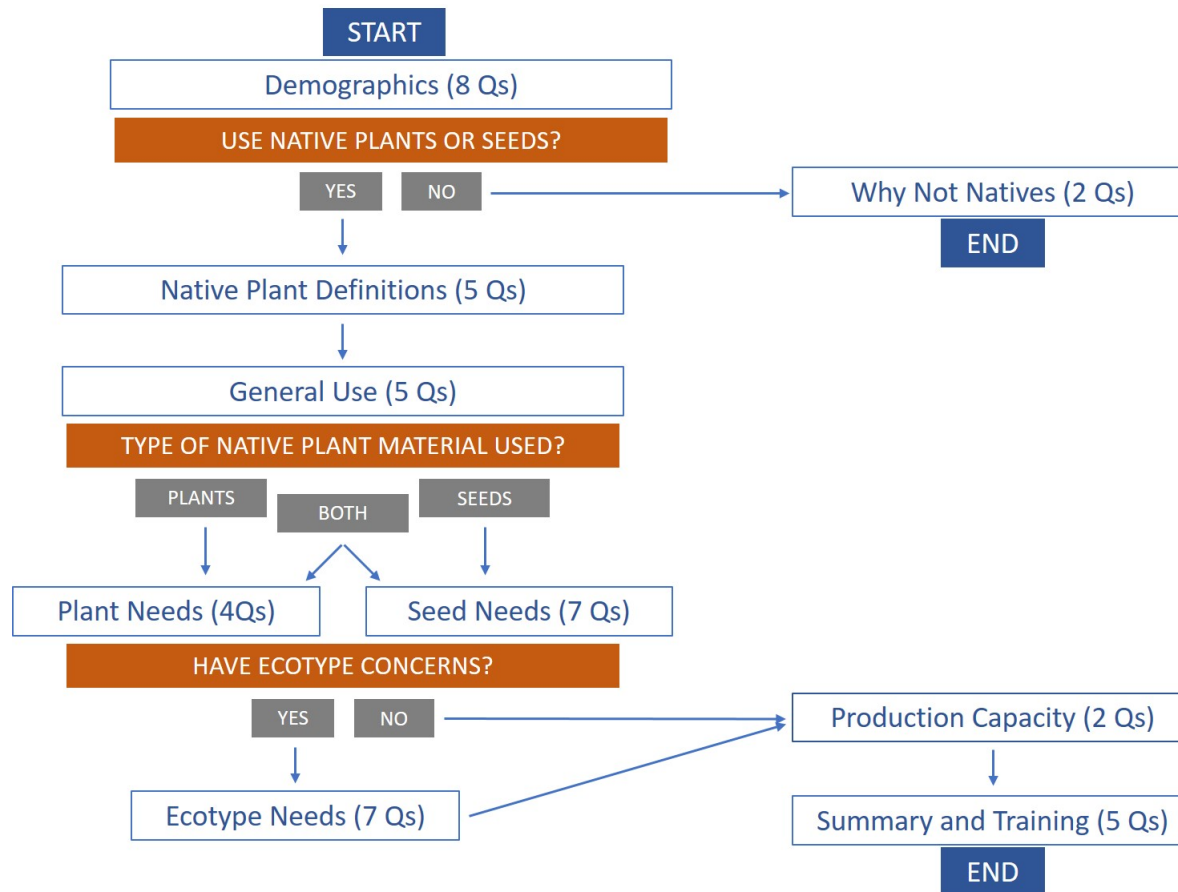
Understand Management Goals

- acres managed
- quantity of plant material used
- species needed
- capacity for long-range planning

Identify Impediments to Native Plant Use

- quantify availability (from the users perspective)
- biological factors, cost, information gaps, procurement procedures, etc.

Understanding Native Plant Need and Use



Understanding Native Plant Production Capacity

Characterization of Native Plant Producers

- location
- distribution range
- types of finished product

Understanding Capacity

- scope and scale of production
- industry knowledge (germination protocols, production protocols)

Identifying gaps

- origin of source material
- provenance documentation

Cooperative Seed Collecting: Building Our Community of Practice

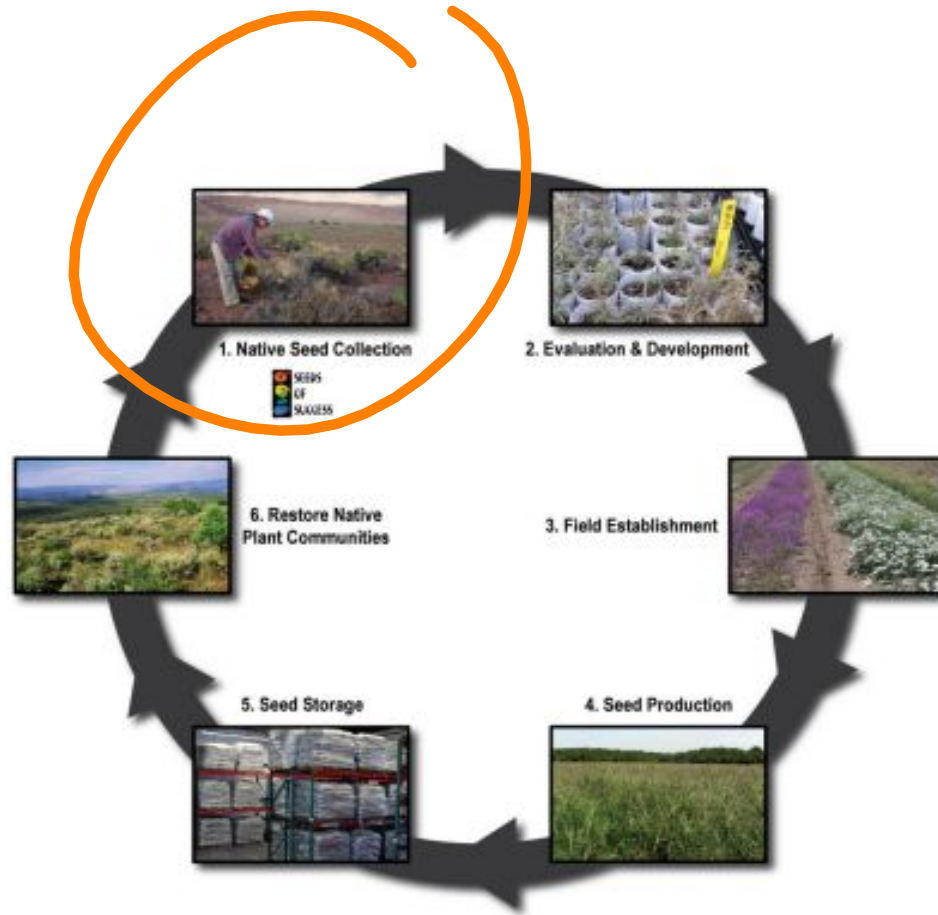
Our goal is a broad-based Seeds of Success membership, inclusive of both federal and non-federal partners, that strives:

1) To continue meet national goals by increasing the amount of native seed put into long-term conservation storage

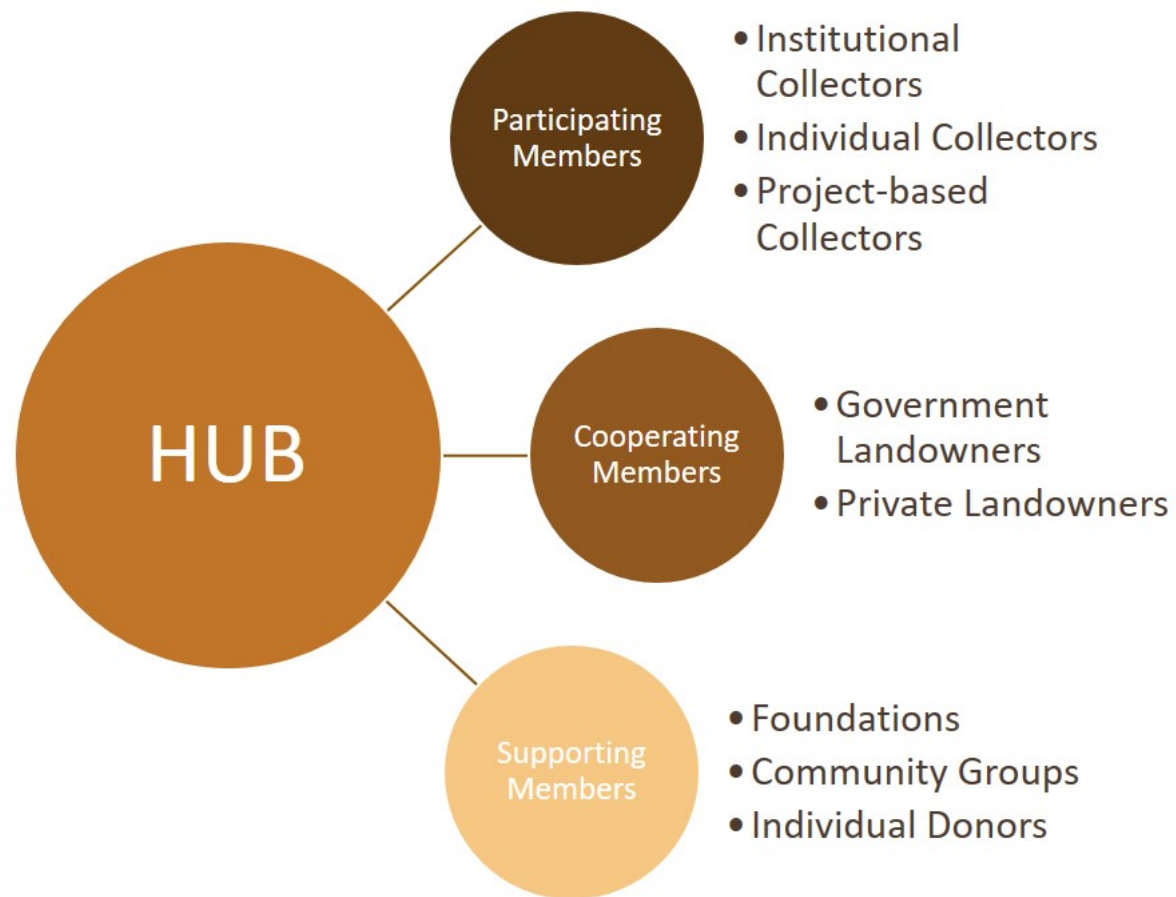
2) To meet local and regional needs by increasing the amount of genetically-appropriate seed available for conservation projects



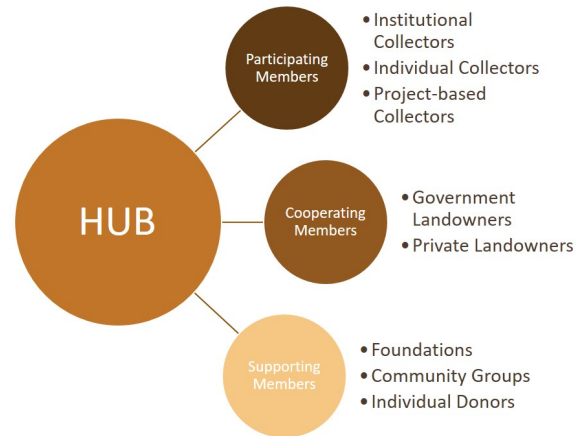
Native Plant Materials Development



Expanding the SOS Partnership in the East



Expanding the SOS Partnership in the East



This model has the potential to:

- 1) increase seed collecting by tapping into established institutions and communities and developing networks of volunteer seed collectors
- 2) increase collection activities by coordinating access to privately-owned lands for targeted seed collecting
- 3) provide land owners with access to genetically-appropriate seeds, including seeds of species that they cannot collect from their own property because the species is not present in sufficient health or population size
- 4) Engage with communities at the local level and garner local financial support

NY Ash Collection

In response to the threat from the exotic Emerald Ash Borer, MARSB coordinated a cooperative ash seed collection in NY State.

20+ partner organizations

70+ volunteer seed collectors

230+ seed collections

Mid-Atlantic Regional Seed Network: Next Steps



Thank You



NYC Parks



What is MARSB?



- Native plant production
 - Seed collecting
 - Seed cleaning
 - Seed banking
- Foundation seed production

Existing Seed Networks in the East

Rhody Native / Rhode Island Natural History Survey

Georgia Native Plant Initiative

Greene County Soil and Water Conservation District Plant Materials Center

Virginia Native Plant Availability Workgroup (in development)

Louisiana Native Plant Initiative

Southeastern Grasslands Initiative (in development)

Mid-Atlantic Regional Seed Network



The preceding presentation was delivered at the

2017 National Native Seed Conference

Washington, D.C. February 13-16, 2017

This and additional presentations available at <http://nativeseed.info>

