

# Native Seed Increase

Jason McNeal, Horticulturist



National Native Seed Conference, February 13-16

# Overview



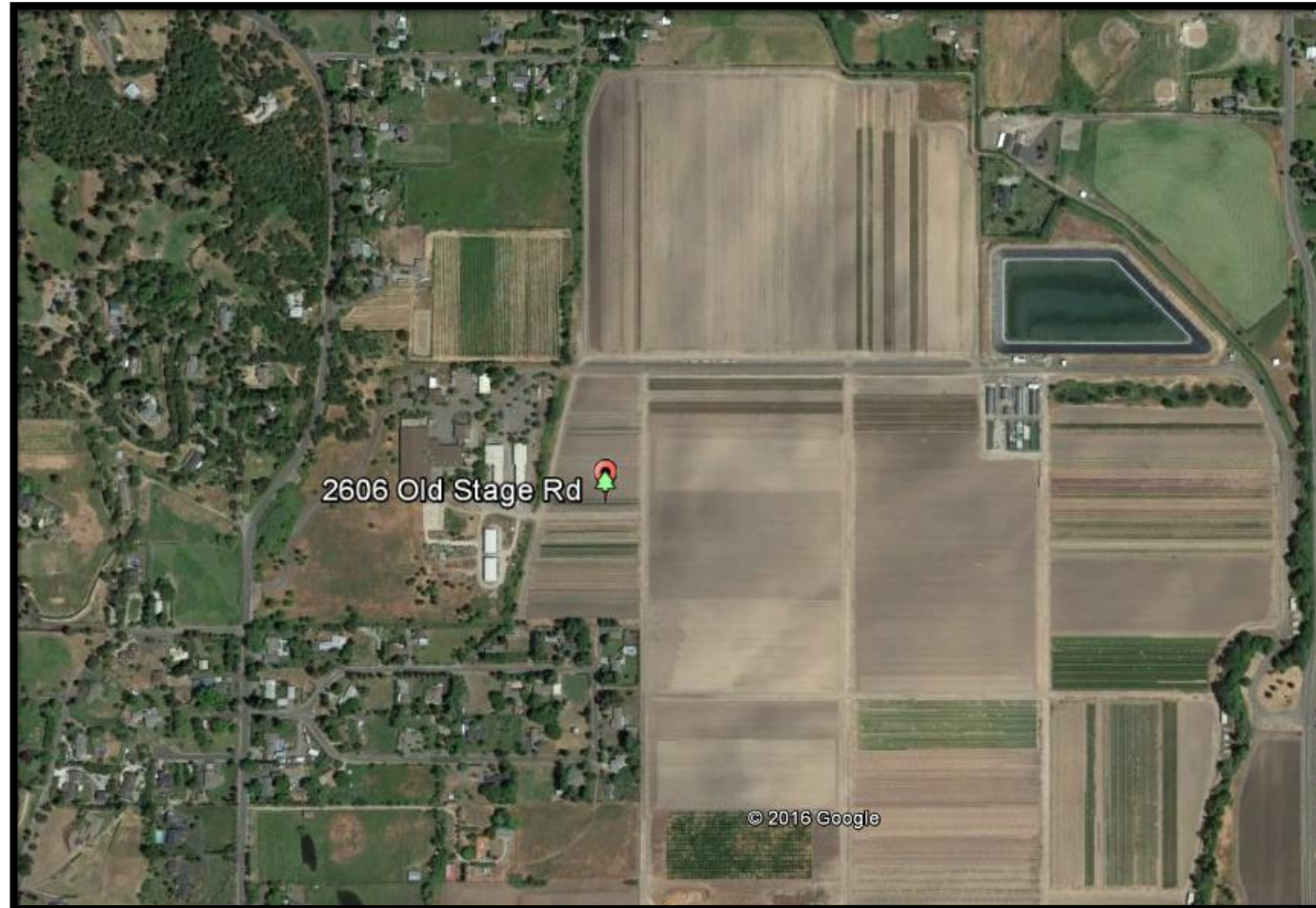
# Nursery Services



- Freezer Storage
- Containerized Production
- Information Services



# Seed Increase Program



# Purpose

- Stone Nursery is able to accommodate small plantings.
- Fractional pounds can produce an abundance of seed.
- Product can be stored or bulked further with Commercial Growers.
- Requests generally Project specific.

# Fall Field Preparation

- Cultivation
- Soil Fumigation
- Formation of Beds 4' in width

# Sowing

- Modified J.E. Love Nursery Drill
- Most crops sown as 4-row plantings



*Elymus elymoides*

# Monitoring

- Vigor
- Pests (disease, insects, herbivory).
- Weed Control





# Harvesting



# Harvesting



# Harvesting



*Solidago Canadensis*



# Harvesting



*Lomatium cookii*



*Limnanthes pumila grandiflora*

# Drying and Packaging



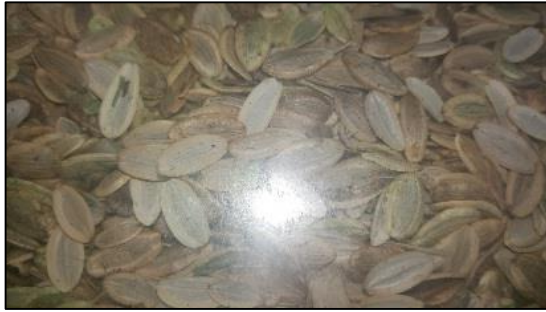
# Successes

- *Collinsia grandiflora*
- *Achillea millefollium*

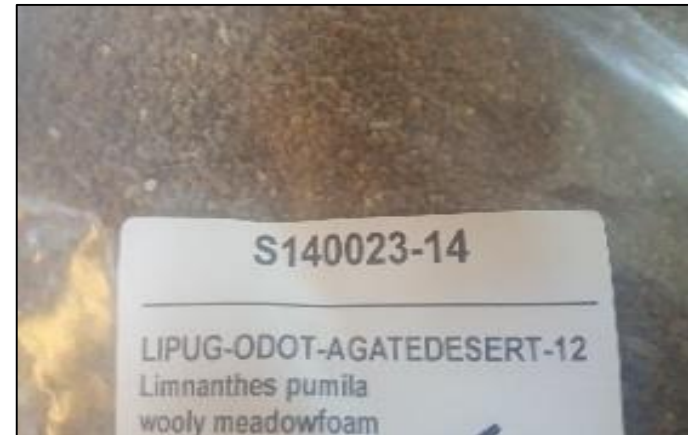


# Successes: T&E Plants

- *Lomatium cookii*: 46.89 pounds from 1/10 acre planting.



- *Limnanthes pumila grandiflora*: ~72 pounds from 1/10 acre planting.



# 2015 Production Figures

Crop Type	Number of Species	Number of Lots	Cleaned Seed Total
Grass	11	32	3255.7
Forb	26	29	979.6
			<b>4235.3</b>

Commonly requested grass genera: *Acnatherum*, *Elymus*, *Festuca*.

Commonly requested forb genera: *Asclepias*, *Clarkia*, *Penstemon*.



# Challenges

- Efficient harvest of wind dispersed seed
- Uneven maturities
- Unpredictable behavior of distant ecotypes

# Future Opportunities

- Currently limited to ~30 acres for Seed Increase
- Additional Production of Listed Species
- Equipment upgrade
- Weed Control

# Conclusion



*Asclepias fascicularis* with Monarch caterpillar present



The preceding presentation was delivered at the

## **2017 National Native Seed Conference**

Washington, D.C. February 13-16, 2017

This and additional presentations available at <http://nativeseed.info>

