



Invasive Species & the Use of Native Seed

Protecting What Matters

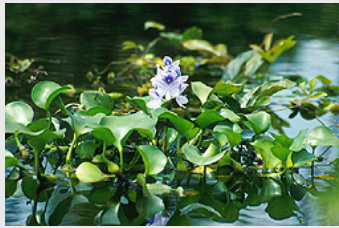
NISC

NATIONAL INVASIVE SPECIES COUNCIL

— SECRETARIAT —

⋮ Invasive Species

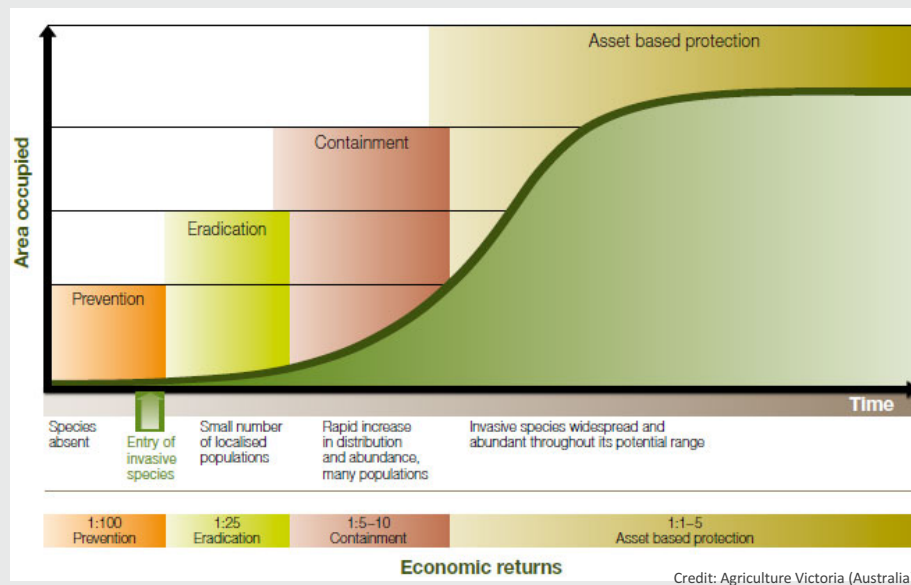
DEFINITION



“with regard to a particular ecosystem, a non-native organism whose introduction causes or is likely to cause economic or environmental harm, or harm to human, animal, or plant health.”

Exec. Order 13751

Invasive Species Management “Hierarchy”

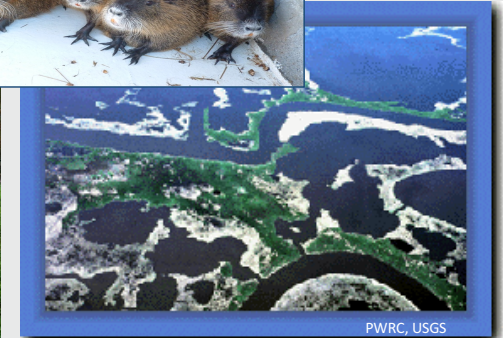


- Prevention
- Eradication
- Control & Management
 - Containment
 - Asset-based Protection
- *Restoration*

Habitat Restoration and Invasive Species

SYSTEMS

- Tropical systems
- Grasslands
- Shrublands
- Wetlands
- Forest systems
- Post-agricultural lands
- Remediated/disturbed areas
- Post-severe weather events



Habitat Restoration and Invasive Species

PRACTICE



Credit: Adirondack Park Invasive Plant Program

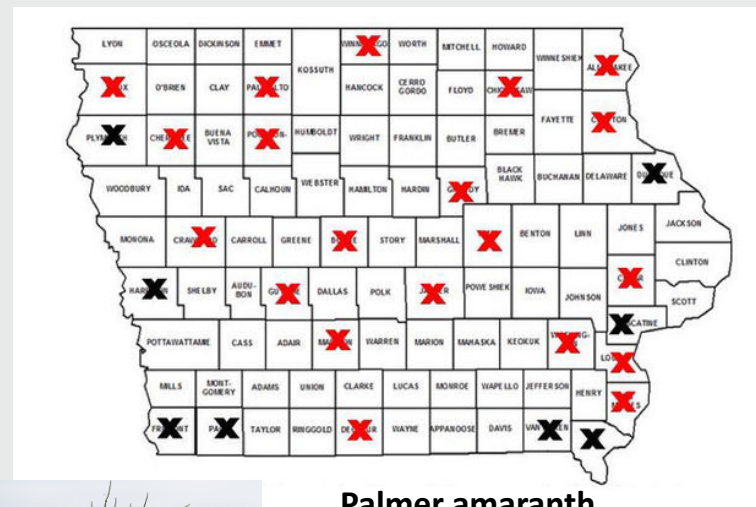


Credit: K.Greer, Natl Interagency Fire Center

- Landscape factors
- Local factors
- Relation to herbicide applications
- Relation to other change drivers
 - Fire
 - Grazing

A Cautionary Note: Seed Contamination

- Supply chain issues
- Quality assurance and quality control
- Implications for land managers
- Implications for funding agencies
- Implications for native seed industry
- Need for continued monitoring



Palmer amaranth

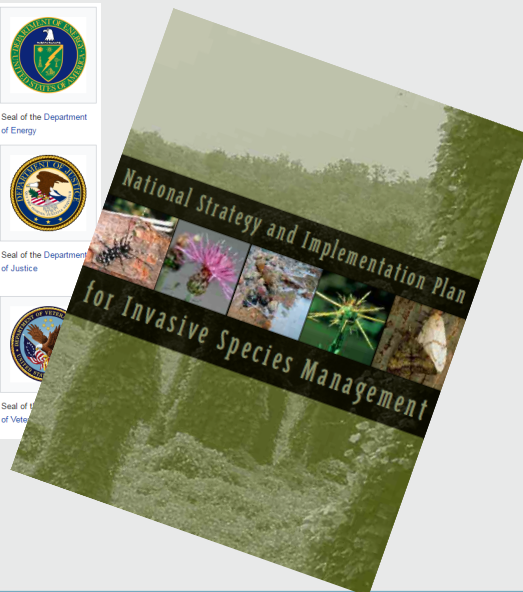
X: introduction by farm equipment

X: introduction by contaminated seed

Credit: Integrated Pest Management, Iowa State University

Invasive Species Agency Guidance/Activities

AGENCY GUIDANCE/ACTIVITIES



- DOI – BLM, FWS, NPS
- USDA – NRCS, USFS
- DOC – NOAA
- DOD – Military Lands
- DOT – FHWA
- EPA – GLRI

- DOE ??
- Parallel with state level activity

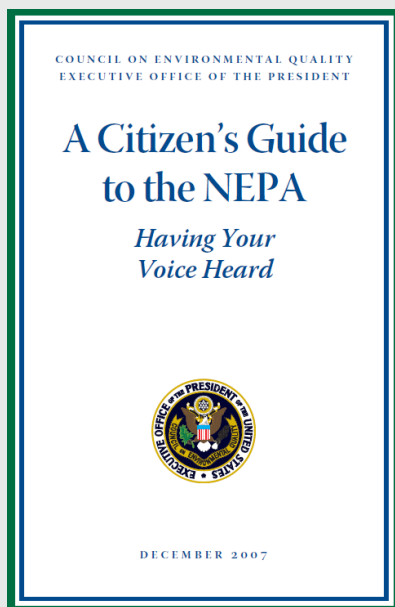
High-Level Policy

HIGH-LEVEL POLICY

- Invasive Species Response “Hierarchy”
- Executive Order 13112 (1999)
- Executive Order 13751 (2016)
- NISC Management Plans (2001, 2008, 2016)
- Native Seed Strategy

EO 13751 Federal agency duties:
(iv) Provide for the restoration of native species, ecosystems, and other assets that have been impacted by invasive species

NEPA Guidance



Practitioner's guide to invasive species and NEPA

- Focus on deliberate management activities
- Prevention, eradication, control, restoration

Issue specific guidance

- e.g., unintentional pathways of introduction/spread
 - Movement of watercraft
 - Assisted migration/managed relocation
- Use of native seed and plants applies to both

■ Questions/Comments

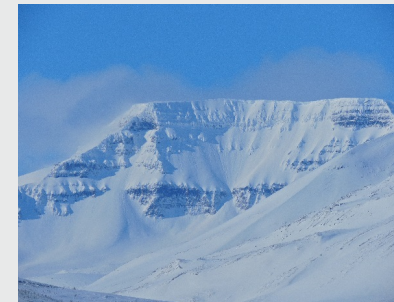
Stas Burgiel, Ph.D.

Asst. Director, Policy & Program Coordination

National Invasive Species Council Secretariat

Tel: 202.208.4163

Eml: stanley_burgiel@ios.doi.gov





The preceding presentation was delivered at the

2017 National Native Seed Conference

Washington, D.C. February 13-16, 2017

This and additional presentations available at <http://nativeseed.info>

