

# Habitat and population monitoring for *Chloropyron maritimum* ssp. *palustre* and *Limonium californicum* on the Coos Bay North Spit



2016

Report to the Bureau of Land Management,  
Coos Bay District

Report prepared by Denise E.L. Giles, Erin C.  
Gray, Matt A. Bahm, and Thomas N. Kaye  
*Institute for Applied Ecology*



## PREFACE

This report is the result of an agreement between the Institute for Applied Ecology (IAE) and a federal agency. IAE is a non-profit organization whose mission is conservation of native ecosystems through restoration, research and education. Our aim is to provide a service to public and private agencies and individuals by developing and communicating information on ecosystems, species, and effective management strategies and by conducting research, monitoring, and experiments. IAE offers educational opportunities through 3-4 month internships. Our current activities are concentrated on rare and endangered plants and invasive species.



Questions regarding this report or IAE should be directed to:

Matt Bahm

Conservation Research Program Director

Institute for Applied Ecology

563 SW Jefferson Avenue

Corvallis, Oregon 97333

phone: 541-753-3099

fax: 541-753-3098

email: [mattab@appliedeco.org](mailto:mattab@appliedeco.org)

## ACKNOWLEDGEMENTS

The author gratefully acknowledges the cooperation in 2016 provided by the Coos Bay District BLM, particularly Jennie Sperling; IAE staff Michelle Allen, Meaghan Petix; IAE/Native Plant Society of Oregon interns Sarai Carter, Ariana Freitag and Liza Holtz; and Saturday Academy Apprentice in Science and Engineering Nicholas Murray. We would also like to thank Kelli VanNorman, ISSSP coordinator, for her continued support and funding for this project.

**Cover photograph:** *Chloropyron maritimum* ssp. *palustre* (Point Reyes bird's-beak), and *Limonium californicum* at the Coos Bay North Spit.

### **Suggested Citation**

Giles, D.E.L, E.C. Gray, M.A. Bahm, and T.N. Kaye, 2016. Habitat and population monitoring for *Chloropyron maritimum* ssp. *palustre* and *Limonium californicum* on the Coos Bay North Spit. 2016 Progress Report. Prepared by Institute for Applied Ecology for USDI Bureau of Land Management; Corvallis, Oregon. viii + 34 pp.

## EXECUTIVE SUMMARY

In 2016 the estimated number of *Chloropyron maritimum* ssp. *palustre* plants on the Coos Bay North Spit land managed by the Coos Bay District of the Bureau of Land Management is ~370,000 (277,000 in the protected area and 93,000 in the unprotected area). This is the lowest population estimate since monitoring began in 2011.

In 2016 the population of *Limonium californicum* is estimated to be ~652,000 with 532,000 and 120,000 in the protected and unprotected area, respectively.

Despite the relatively high number of plants, both species experienced decreases in total population size from 2015-2016, and *Chloropyron maritimum* ssp. *palustre* showed large decreases in areal cover in the unprotected area.

The area occupied with these rare species is found in a long, narrow strip of appropriate habitat in a dynamic system. This narrow strip of land (~700m long with a maximum width of 50m) lies in a precarious location along the shoreline where minor fluctuations in sea level (due to natural or manmade activities), could cause significant loss of habitat. More immediate effects from ORV use are also evident.

# TABLE OF CONTENTS

<b>PREFACE</b> .....	<b>II</b>
<b>ACKNOWLEDGEMENTS</b> .....	<b>III</b>
<b>EXECUTIVE SUMMARY</b> .....	<b>IV</b>
<b>TABLE OF CONTENTS</b> .....	<b>V</b>
<b>LIST OF FIGURES</b> .....	<b>VII</b>
<b>LIST OF TABLES</b> .....	<b>VIII</b>
<b>INTRODUCTION</b> .....	<b>1</b>
<b>SPECIES BACKGROUND</b> .....	<b>2</b>
<i>Chloropyron maritimum</i> ssp. <i>palustre</i> .....	2
Range.....	2
Habitat.....	2
Description.....	3
Reproductive Biology.....	3
Population Biology.....	3
Host Plants.....	3
Taxonomy.....	4
<i>Limonium californicum</i> .....	4
Range.....	4
Habitat.....	4
Description, Reproductive and Population Biology.....	4
Taxonomy.....	4
<b>METHODS</b> .....	<b>6</b>
Overview.....	6
Habitat and Community Measurements.....	6
Measurements of <i>C. maritimum</i> ssp. <i>palustre</i> .....	6
Measurements of <i>L. californicum</i> .....	6
Population Estimates.....	9
Mapping.....	9
Community Analysis.....	12
<b>RESULTS</b> .....	<b>13</b>
Population Survey.....	13
<i>Chloropyron maritimum</i> ssp. <i>palustre</i> .....	13
<i>Limonium californicum</i> .....	17
Community Analysis.....	20
Habitat Mapping.....	25

Protected Area .....	25
Unprotected Area .....	25
<b>CONCLUSIONS .....</b>	<b>25</b>
<b>RECOMMENDATIONS .....</b>	<b>26</b>
<b>LITERATURE CITED .....</b>	<b>29</b>
<b>APPENDIX A. SAMPLING METHODOLOGY FOR <i>C. MARITIMUM</i> SSP. <i>PALUSTRE</i> AND <i>L. CALIFORNICUM</i>. .....</b>	<b>31</b>

## LIST OF FIGURES

Figure 1. Two color variants of *Chloropyron maritimum* ssp. *palustre*.

Figure 2. *Chloropyron maritimum* ssp. *palustre* on the Coos Bay North Spit, note the two color variants, and the salt excretions on the bracts.

Figure 3. *Limonium californicum* on the Coos Bay North Spit. On the left, *L. californicum* can be seen co-occurring with *C. maritimum* ssp. *palustre*, the flowering stems of *L. californicum* stand above the surrounding vegetation, on the right, a close-up of the loose and branching panicle with many small flowers.

Figure 4. Area surveyed for *Chloropyron maritimum* ssp. *palustre*. Blue lines indicate monitoring transects established in 2010-2012. See Appendix A for maps and information regarding all monitoring transects.

Figure 5. Monitoring transect in the protected area showing the patchiness of the habitats, which are greatly influenced by microtopography. Photopoints from each monitoring transect are included in Appendix A.

Figure 6. NMS ordination of community composition within the protected area of the *Chloropyron maritimum* ssp. *palustre* population at the Coos Bay North Spit (2010-2016). Triangles represent sample units (quadrats along transects) in species space, and distance between points indicates similarity of community composition by quadrat. Polygons outline the extent of all of the sample units. Blue dots and species abbreviations (Table 7) indicate the centroid for species locations.

Figure 7. NMS ordination of community composition within the protected and unprotected habitat types (2016). 0=unprotected and 1=protected habitat types. Triangles represent sample units (quadrats along transects) in species space, and distance between points indicates similarity of community composition by quadrat. Polygons outline the extent of all of the sample units. Blue dots and species abbreviations (Table 7) indicate the centroid for species locations.

Figure 8. Percent of habitat classes represented along transects in both protected and unprotected habitats in 2016. Habitat classes correspond to Table 3.

Figure 9. Habitat map of the *C. maritimum* ssp. *palustre* population at the Coos Bay North Spit, created in 2011-2013. Habitat codes are listed in Table 3. Major changes from 2011-2013 include a decrease in the cover of both “*Chloropyron* Flat” (CF) and increases in the cover of “*Limonium Chloropyron* Flat, (LCF) and “*Limonium* Flat” (LF).

Figure 10. 2013-2015 habitat maps for unprotected area. The remaining ‘vegetated’ area is classified as either SD or SDD based on habitat classes described in Table 3. Note that while the presence of *C. maritimum* ssp. *palustre* is quite patchy in this area, the location and extent of these patches have remained relatively stable over the course of this study.

Figure 11. Schematic diagram (not to scale) of transects in both the protected and unprotected areas as of 2015.

## LIST OF TABLES

Table 1. Schedule of activities for habitat monitoring and improvement for *Chloropyron maritimum* ssp. *palustre* in 2010-2014

Table 2. Habitat codes used for mapping in 2011-2013. Heavily disturbed areas (with rutted tire tracks) were also noted in the unprotected area.

Table 3. Areal cover, average number of *Chloropyron*/m<sup>2</sup> in the protected area 2011-2013 and unprotected area 2012-2013 for each of the mapped habitat units. The unprotected area was not mapped in 2011.

Table 4. Number of *Cordylanthes maritimum* ssp. *palustre* plants per m<sup>2</sup> by transect.

Table 5. Average number of branches per plant.

Table 6. Average number of flowers per plant.

Table 7. Species list including nativity from plots within the *Chloropyron maritimum* ssp. *palustre* population at the Coos Bay North Spit in 2013. Species codes are from the USDA PLANTS database (USDA NRCS 2012).



# Habitat and population monitoring for *Chloropyron maritimum* ssp. *palustre* and *Limonium californicum* on the Coos Bay North Spit

REPORT TO THE BUREAU OF LAND MANAGEMENT, COOS BAY  
DISTRICT

## INTRODUCTION

*Chloropyron maritimum* ssp. *palustre* (Point Reyes bird's-beak, still referenced as *Cordylanthus maritimus* ssp. *palustris* in USDA Plants Database; <http://plants.usda.gov/core/profile?symbol=COMA5>) is a USFWS Species of Concern, listed as Endangered by the state of Oregon, considered endangered or threatened throughout its range (List 1) by the Oregon Biological Information Center, and a Bureau Sensitive Species with the Bureau of Land Management. *Chloropyron maritimum* ssp. *palustre* is known to occur at 18 sites in Oregon, primarily the Coos Bay area, Yaquina Bay, and Netarts spit (Kaye 1991). *Limonium californicum* (Western marsh rosemary) is a Bureau Sensitive species and is also listed by the State of Oregon as critically imperiled due to rarity or vulnerability to potential extinction. Both species exist together in tidal flats on the North Spit, North Bend, Oregon.

The population of *C. maritimum* ssp. *palustre* at the Coos Bay North Spit has relatively recently been protected from Off Highway Vehicle (OHV) use which had caused severe damage to the population. The population at the Coos Bay North Spit is one of the only protected populations of *C. maritimum* ssp. *palustre*. The population increased substantially following protection; however, in recent years, it appears



Figure 1. Two color variants of *Chloropyron maritimum* ssp. *palustre*.

to be declining (J. Sperling, Coos Bay BLM, personal communication). It has been hypothesized that in the absence of disturbance, the density of other salt marsh plants, *Limonium californicum* (western marsh-rosemary) and *Salicornia depressa* (pickleweed) has increased, and may be inhibiting recruitment, growth, and/or reproduction of *C. maritimum* ssp. *palustre*. Changes in the plant community and industrial use of the surrounding bay may have also altered hydrology and sand accretion rates, thus changing site microtopography, and possibly contributing to altered salinity.

There are two primary objectives of this project.

1. Through a combination of annual mapping and monitoring of the population, we will track changes in population size and location through time of both *Chloropyron maritimum* ssp. *palustre* and *Limonium californicum*.
2. Evaluate differences in density of protected and unprotected portions of the populations of both *Chloropyron maritimum* ssp. *palustre* and *Limonium californicum*.

## SPECIES BACKGROUND

### *Chloropyron maritimum* ssp. *palustre*

Background information is repeated from Kaye (1991). Additional information can be found in Brian (2002).

#### Range

*Chloropyron maritimum* ssp. *palustre* occurs along the Pacific Coast of North America from Morro Bay, San Luis Obispo County, California, and north to Netarts Spit, Tillamook County, Oregon. In Oregon, the majority of the populations are located in the Coos Bay area. *Limonium californicum* follows a similar distribution pattern along the western coastline.

#### Habitat

*Chloropyron maritimum* ssp. *palustre* is a salt marsh species. It occurs in low-sand salt marshes dominated by *Salicornia depressa*, *Distichlis spicata*, and *Jaumea carnosa*. Elevations are typically at, or just above, sea level. The Pacific Ocean exerts a strong marine influence over the climate of coastal wetlands, moderating environmental extremes. The annual precipitation along the Oregon coast averages about 180 cm, with an average January minimum temperature of 2-5°C, and an average July maximum of



Figure 2. *Chloropyron maritimum* ssp. *palustre* on the Coos Bay North Spit, note the two color variants, and the salt excretions on the bracts.

20°C (Franklin and Dyrness 1973). *Limonium californicum* similarly occupies salt-marsh habitat at elevations millimeters to centimeters above the elevations where *C. maritimum* are found (personal observation).

### **Description**

*Chloropyron maritimum* ssp. *palustre* grows to 10 to 31 cm in height. Flowers are less than 3.5 cm in length, usually pinkish to purple, though some yellowish-white color variation is also seen. Floral bracts are oblong with a pair of short teeth at the tip. Foliage is grayish green and often villous (Eastman 1990; Figure 1).

### **Reproductive Biology**

*Chloropyron maritimum* ssp. *palustre* is an annual, reproducing from seed each year. It blooms from June through September (or October) and forms fruits from August through November. Seedlings have been observed in February at Yaquina Bay (T. Kaye, personal observation) and seeds may germinate throughout the winter and early spring. Laboratory studies of the non-marine species of *Chloropyron* show that the seeds from low-elevation species germinate well at moderate temperatures (10°C) and not at high temperatures (27°C), and seeds of high-elevation species require a cold pre-treatment (-14 to -13°C) to germinate (Chuang and Heckard 1971). Seeds of *C. maritimum* ssp. *maritimum*, a different subspecies found in salt marshes in southern California, require fresh water and six weeks of cold storage for germination (Fink and Zedler 1990a, 1990b), and benefit from 1 or 2 years of after-ripening and scarification (Newman 1981). The flower and attendant bracts of *C. maritimum* ssp. *palustre* form showy inflorescences similar to Indian paintbrush (*Castilleja*, a related genus), but no insects have been observed visiting this subspecies to date (Kaye et al. 1990). It is possible that *C. maritimum* ssp. *palustre* flowers are pollinated by a nocturnal visitor that was not observed, but we suspect that the flowers are self-pollinating. Fruit-set and seed-set were fairly high on most individuals from which seeds were collected in 1990, a trait typical of self-pollinating, annual plants (Weins 1984). In contrast, solitary bees that nest in nearby upland habitats are required for pollination of *C. maritimum* ssp. *maritimum*, and where pollinators are lacking, seed production is reduced (Lincoln 1985).

### **Population Biology**

At several sites in the Coos Bay area, *C. maritimum* ssp. *palustre* grows in dense patches and as dispersed individuals. Known populations across the Oregon coast, while rare (and scattered), often occur in dense patches and less often as dispersed individuals. This demographic pattern may relate to seed dispersal by water and to suitability of microsites for seedling establishment. Seeds dispersed by water and wind, may either spread over a wide area or accumulate in areas where suspended particles settle from the fluid (air or water). Work with *C. maritimum* ssp. *maritimum* indicates a heterogeneous microtopography causes seed entrapment and population establishment (Fink and Zedler 1990a).

### **Host Plants**

All species of *Chloropyron* are hemi-parasites, i.e., they derive some of their resources directly through photosynthesis and also from other plants through underground root connections (Chuang and Heckard 1971). Some species of *Chloropyron* are facultative hemi-parasites in that they are capable of completing their life-cycle without a host under the favorable conditions of a greenhouse, but the plants are almost certainly parasitic in the wild (Chuang and Heckard 1971). The natural hosts for *C. maritimum*

ssp. *palustre* are most likely *Salicornia depressa*, *Distichlis spicata*, *Limonium californicum*, *Deschampsia caespitosa*, and *Jaumea carnosa* (Chuang and Heckard 1971). Evidently, *C. maritimum* ssp. *palustre* lack host specificity. Instead, the species may have strong habitat preferences that maintain the associations with its standard hosts (Chuang and Heckard 1971). Vanderwier and Newman (1984) have shown that haustoria of *C. maritimum* ssp. *maritimum*, from southern California, are capable of inter- and even intra-specific parasitism in the field and the laboratory. It is not known how soon after germination a seedling in the field will establish a root-connection with a host.

### **Taxonomy**

*Chloropyron maritimum* ssp. *palustre* is a member of the subgenus *Hemistegia*. Chuang and Heckard (1973) used seed coat morphology to identify relationships within the genus. They revised this species in 1973, recognizing the Oregon coastal plants as the more northern subspecies *palustre*, and retaining subspecies *maritimum* for the southern California and Baja California plants. The latter subspecies is also a candidate for listing by the USFWS.

## ***Limonium californicum***

### **Range**

*Limonium californicum* occurs along the Pacific Coast of North America from San Diego County, California to isolated populations on the Southern Oregon Coast. In Oregon, the majority of the populations are located in the Coos Bay area.

### **Habitat**

*Limonium californicum* is a salt marsh species found at elevations below 50m. It occurs in low-sand salt marshes dominated by *Salicornia depressa*, *Distichlis spicata*, and *Jaumea carnosa*. See the habitat description of *C. maritima* ssp. *palustre* for further details on salt marsh habitats.

### **Description, Reproductive and Population Biology**

*Limonium californicum* is a perennial with a heavy, reddish, woody caudex. The leaves are oblong to oblong-obovate, mostly obtuse. The blades are generally 5-20 cm long, tapering into petioles. Flowering stems are stout and generally 20-50 cm, loosely paniculate with branches densely flowered. Flowers are pale violet to white, 5-6mm long and 2mm wide (Jepson 1993; Figure 3). Hundreds of tiny lavender flowers appear and dry on the stalks, much like its ornamental relative, *Statice* (*Limonium* spp.). There is commonly a crust of salt crystals on the underside of the leaves, and at times whole leaves are white from the dried brine. *L. californicum* reproduces both vegetatively and by seed. It is not known what pollinators play a role in *L. californicum* reproduction; however various species of bumblebees have been observed visiting *L. californicum* flowers by IAE staff during monitoring, as well as some small fly species.

### **Taxonomy**

*Limonium californicum* is a member of the Plumbaginaceae family.



Figure 3. *Limonium californicum* on the Coos Bay North Spit. On the left, *L. californicum* can be seen co-occurring with *C. maritimum* ssp. *palustre*, the flowering stems of *L. californicum* stand above the surrounding vegetation, on the right, a close-up of the loose and branching panicle with many small flowers.

## METHODS

### Overview

This project was initiated in the *C. maritimum* ssp. *palustre* population on the Coos Bay North Spit Area of Critical Environmental Concern (T25S, R13W, Section 19, NNW) in Coos County, Oregon (managed by the Coos Bay District of the B LM) in summer 2010 (Table 1). In July 2010, we surveyed the population and delineated the population boundaries using GPS. This information was used to design the sampling and experimental protocols that were initiated in August 2010, and repeated in August 2011. In August 2011, the southwestern portion of the population (beyond the protective barrier) was surveyed for appropriate plot locations. In the protected area, transects were established in 2010, and 2011, with one additional transect added in 2014. In the unprotected area, transects were installed in 2011, and 2012. Twenty meter permanent monitoring transects were installed and marked with rebar topped with plastic caps at both ends. In the unprotected area the head of the transect was marked with rebar placed on the interior side of the road to prevent damage to vehicles using the area, and the monitored portion of the transect begins at the edge of vegetation on the east side of the 'road'. A summary of all transects installed and monitored as a part of this study are listed in Table 2. Transects are oriented perpendicular to the habitat margin, and extend 20m (Figure 4).

### Habitat and Community Measurements

Community composition data was recorded for all transects in 2010-2016. Percent cover for all species was recorded in 1m<sup>2</sup> increments along the right side of the transect, when viewed from the transect's origin. At each meter, on the 'right' side of the transect when standing at the origin, habitat classes were assigned. In 2014-2016, only 5-10 of the 1m<sup>2</sup> plots were monitored for plant community, however all were assigned habitat classes. Photopoints were taken annually looking along each transect, from both the beginning and end and are available upon request.

### Measurements of *C. maritimum* ssp. *palustre*

*C. maritimum* ssp. *palustre* sampling occurred on four transects in 2010 and all transects in 2011-2016. *C. maritimum* ssp. *palustre* measurements include counting the number plants, as well as the number of branches and flowers on each plant, in a randomly placed 0.25m x 0.25m frame. See Appendix for details regarding protocols for plant monitoring and sub-sampling, as well as habitat class assignments.

### Measurements of *L. californicum*

*Limonium californicum* monitoring occurred on all transects in 2014 through 2016. In 2014, sampling was modified to include measurements of *L. californicum* in the same area sub-sampled for *C. maritimum* ssp. *palustre*. *L. californicum* measurements included the count of individuals (seedlings, vegetative or reproductive, and the presence of aborted flowering stems) in the randomly placed 0.25m x 0.25m sub-sampling frame.

Table 1. Timeline of activities from 2010-2016. Initial stages of the study were implemented in 2012 and have been both modified and augmented since that time. In 2014-2016, monitoring protocols were adapted to include measurements of *Limonium californicum*. Items in parentheses are scheduled pending funding for 2017.

ACTIVITY	2010			2011			2012			2013			2014			2015			2016			2017		
	Summer	Fall/Winter	Spring	Summer	Fall/Winter	Spring	Summer	Fall/Winter	Spring	Summer	Fall/Winter	Spring	Summer	Fall/Winter	Spring	Summer	Fall/Winter	Spring	Summer	Fall/Winter	Spring	Summer	Fall/Winter	
Delineate Population in Protected Area	x			x			x			x			x			x			x				(x)	
Design Sampling Protocol	x																							
Establish long-term monitoring transects and experimental plots	x																							
Monitor long-term transects	x			x			x			x			x			x			x					(x)
Take photopoints along all transects	x			x			x			x			x			x			x					(x)
Enter and analyze data, write annual progress report		x			x			x			x			x			x			x				(x)
Delineate Population (in unprotected Area)				x			x			x			x			x			x					(x)
Design Sampling Protocol (in Unprotected area)				x																				
Establish long-term monitoring transects and experimental plots in the unprotected area							x																	

Table 2. List of long-term monitoring transects established as a part of this study.

AREA	TRANSECT #	YEAR ESTABLISHED	TAG # (ORIGIN)	TAG # (END)	BEARING	DISTANCE FROM ORIGIN TO VEG START (M)	TOTAL TRANSECT LENGTH (M)
PROTECTED	0	2010	750	871	132°	N/A	20
PROTECTED	2	2011	501	870	120°	N/A	20
PROTECTED	4	2010	751	873	130°	N/A	20
PROTECTED	7	2010	752	868	168°	N/A	20
PROTECTED	11	2010	753	867	255°	N/A	20
PROTECTED	13	2011	514	865	276°	N/A	20
PROTECTED	15	2010	754	869	252°	N/A	20
PROTECTED	16	2011	515	866	250°	N/A	20
PROTECTED	17	2011	517	872	125°	N/A	20
PROTECTED	18	2012	502	864	282°	N/A	20
PROTECTED	19	2014	862	863	200°	N/A	20
UNPROTECTED	20	2012	391	N/A	114°	16	36
UNPROTECTED	21	2012	400	N/A	128°	12	32
UNPROTECTED	22	2012	388	N/A	118°	11.5	31.5
UNPROTECTED	23	2012	385	N/A	124°	16	36
UNPROTECTED	24	2014	386	N/A	130°	17	37
UNPROTECTED	25	2014	387	N/A	124°	13 (right before SADE)	33
UNPROTECTED	26	2014	389	N/A	120°	24 (R of stream)	44 (end in tidal flat)
UNPROTECTED	27	2014	390	N/A	120°	11	31
<b>TOTAL # OF TRANSECTS</b>	<b>19</b>						



## Population Estimates

In 2010, information from the sample-plots was used to estimate the total population size of *C. maritimum* ssp. *palustre* by multiplying the average number of plants m<sup>-2</sup> ( $\theta$ ) by the total habitat area (N = 2294 m<sup>2</sup>):

$$\text{population size estimate} = \theta * N$$

In 2011, the sampling method was modified to increase sampling efficiency and accommodate the heterogeneity of the habitat at the site. In 2014, we began using the modified method to estimate the total population size for *L. californicum*. Along each 20m transect, a habitat class was assigned to each 1 m<sup>2</sup> plot (Table 3). To estimate total population size, the average number of plants per m<sup>2</sup> in each habitat type was determined and multiplied by the area covered by each habitat type.

## Mapping

In addition to monitoring transects, the area occupied by the *C. maritimum* spp. *palustre* population was mapped by habitat class. Habitat classes were defined as described in Table 3. Boundaries between habitat classes were delineated using an Oregon GPS 450 handheld unit. Data was compiled using MapWindow, an open source GIS software, to delineate boundaries between habitat types. In 2012-2016, the unprotected area was also mapped using the same habitat class delineations used in the protected area.

Table 3. Habitat codes used for mapping in 2011-2015. Heavily disturbed areas (with rutted tire tracks) were also noted in the unprotected area.

Code	Habitat	Description
CF	<i>Chloropyron</i> flat	<i>Chloropyron</i> cover $\geq$ 50%
LCF	<i>Limonium-Chloropyron</i> flat	<i>Limonium</i> , <i>Chloropyron</i> codominant
LF	<i>Limonium</i> flat	<i>Limonium</i> cover $\geq$ 50%
GT	Grass transition	Differentiated by presence of <i>Ammophila</i> or <i>Leymus</i> , marks transition into small stabilized dune habitat. Some <i>Chloropyron</i> present but only in trace amounts. This is the absolute upper boundary of COMAPA habitat.
SD	<i>Salicornia</i> depression	<i>Salicornia</i> dominant species; area of higher water during the tide. Differs from waterway by abundant <i>Salicornia</i> , and little to no bare sand.
SDD	<i>Salicornia-Distichlis</i> depression	<i>Salicornia</i> dominant, but <i>Distichlis</i> cover $\geq$ 25%
Sand	Sand	Highest reach of the tide, but water does not linger here for long. At least some COMAPA in trace amounts.
Waterway	Waterway	Other plants may be here, but not appropriate habitat for COMAPA. Various courses throughout entire area, usually adjacent to SD, SDD.
D-Rise	<i>Distichlis</i> rise	Small hill, <i>Distichlis</i> dominated, with minor patches of <i>Jaumea carnosa</i> nearest to the ocean.
Marsh	Marshy area	Marshy area dominated by <i>Scirpus</i> sp., area inundated by tides.



Figure 4. Area surveyed for *Chloropyron maritima* ssp. *palustre*. Blue lines indicate monitoring transects established in 2010-2012. See Appendix A for maps and information regarding all monitoring transects.



Figure 5. Monitoring transect in the protected area showing the patchiness of the habitats, which are greatly influenced by microtopography. Photopoints from each monitoring transect are included in Appendix A.

## Community Analysis

We used a common ordination method, non-metric multidimensional scaling (NMS; (Kruskal 1964), to assess relationships of individual species cover relative to primary gradients in the plant community (ordination axes). NMS is an ordination method that is best used for community analyses, often with non-normal data with non-linear relationships (McCune and Grace 2002). Due to heterogeneity in the data set, rare species that occurred in 5% or less of the plots were deleted and species cover data was  $\log(x+1)$  transformed to reduce skewness. Outliers (those greater than 2 SD from the mean) were removed. We assessed species data relative to an environmental matrix with cover data of bare ground, litter, and habitat type (protected/unprotected). NMS ordinations were performed using PC-ORD version 6.0 (McCune and Mefford 2011) with the autopilot setting “slow and thorough” mode, Sørensen distance measure, and no penalty for ties. We ordinated data from 2016 only to look at

trends related to the plant community in protected and unprotected areas. In addition, we conducted an ordination on data from seven years in the protected area only.

Differences in plant community between protected and unprotected areas (in 2016 only) were tested with multi-response permutation procedure (MRPP; Mielke and Berry 2001) using the Sørensen distance measure, in PC-ORD. Due to differences found using MRPP, we conducted an Indicator Species Analysis to investigate if species were associated with the protected or unprotected area. Indicator Species Analysis combines relative abundance and relative frequency of a species in defined groups, and produces indicator values (IVs), which are the percentage of perfect indication for a species within a particular group (McCune and Grace 2002). Statistical significance of indicator values ( $p$ -value) is evaluated using a Monte Carlo method of randomizations; 1000 randomizations were run to determine the proportion of random trials that gave indicators equal to or greater than the observed.

## RESULTS

### Population Survey

#### *Chloropyron maritimum* ssp. *palustre*

The edges of the *C. maritimum* ssp. *palustre* population at the North Spit were defined by *Pinus contorta* var. *contorta*/*Cytisus scoparius* scrub transitioning to *Ammophila arenaria*/sand with scattered *Leymus mollis*. This drops off into an area more regularly impacted by tides/waves. *Chloropyron maritimum* ssp. *palustre* distribution is patchy, from clumps of plants scattered in dense stands of *S. virginica*, to large swathes interspersed with *L. californicum*. Until 2014, *L. californicum* was nearly absent in the disturbed area. Both color morphs (green and purple) of *C. maritimum* ssp. *palustre* were evenly represented throughout the population.

Variation in density and size of *C. maritimum* ssp. *palustre* may be due to a combination of plant community and abiotic factors. Microtopographic variations also effect the levels of inundation experienced on site. The establishment (and subsequent stabilization) of substrate has been noted particularly in the protected area, where *L. californicum* cover has increased; most likely due to decreases in disturbance to this perennial species.

We estimated that in 2010, the total number of *C. maritimum* ssp. *palustre* in the protected area at the North Spit was 380,991 plants. In 2011-2016, due to the patchiness of the population, the population size in the protected area was estimated by calculating the average number of plants per m<sup>2</sup> in all habitat classifications and then multiplying by the areal cover of each habitat class (Table 4). In the protected area, the population of *C. maritimum* ssp. *palustre* has ranged from a high of ~916,000 in 2011 to a low of ~124,000 in 2012. In 2016 the population of *C. maritimum* ssp. *palustre* is estimated to be ~277,000 (Table 4). The precipitous drop of *C. maritimum* ssp. *palustre* between 2011 and 2012 in the protected area coincides with decreases in the cover of *C. maritimum* ssp. *palustre* dominated habitat classes (CF and less so LCF) and increases in the cover of *Limonium* dominated habitat types (LF).

In 2012, the population in the unprotected area was estimated to contain ~545,000 *C. maritimum* ssp. *palustre* plants, and in 2013, this number decreased to ~296,000 (Table 5). Values rebounded in 2014

and 2015 (Figure 6), but have decreased in 2016 to the lowest estimated value of just 93,000 (Table 5). In the unprotected area, the population of *C. maritimum* ssp. *palustre* has ranged from a low of ~93,000 in 2016 to and a high of ~1,053,000 in 2015 (Table 5).

Both the protected and unprotected populations have followed similar trends indicating that similar factors are influencing the population dynamics in both portions of the population (Figure 6). Continued monitoring of transects combined with habitat surveys is recommended on at least a three-year cycle to elucidate the population trends for both listed species in the protected and unprotected portions of the site. More regular monitoring is recommended if activities that could affect microtopography at the site are to be undertaken (including but not limited to dredging activities).

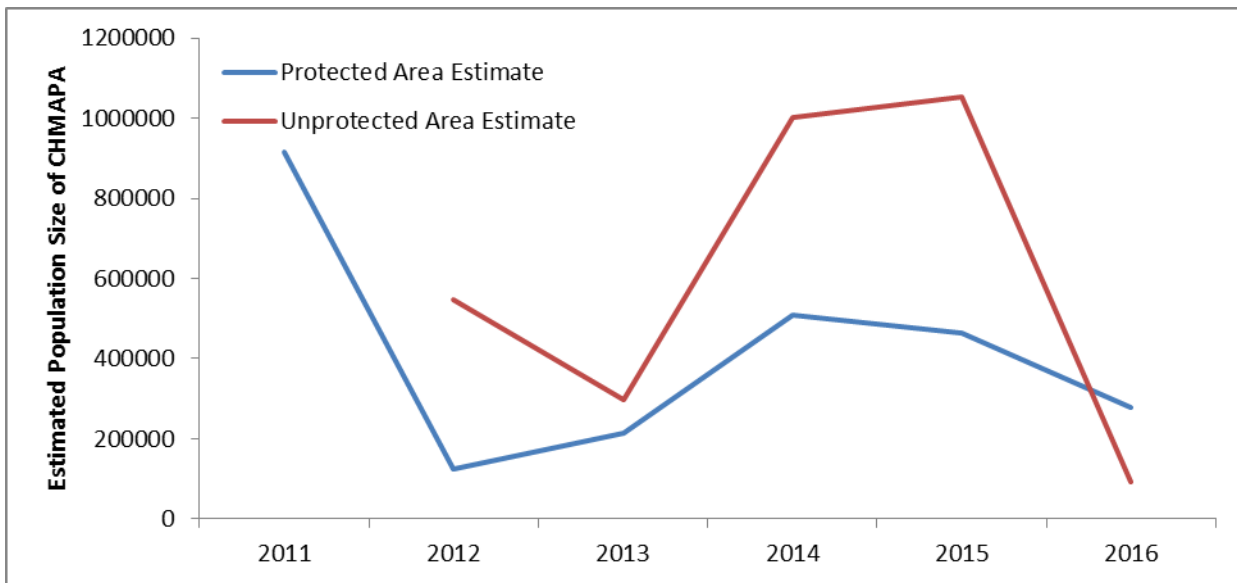


Figure 6. Estimated population size of *Chloropyron maritimum* ssp. *palustre* on the Coos Bay North Spit from 2011-2016.

Table 4. Areal cover of each habitat type and number of *Chloropyron maritimum* spp. *palustre* plants per m<sup>2</sup> in protected and unprotected areas at North Spit from 2011-2016. The unprotected area was not mapped in 2011.

Habitat Code	Area (m <sup>2</sup> )						CHMAPA/m <sup>2</sup>						
	2011	2012	2013	2014	2015	2016	2011	2012	2013	2014	2015	2016	
PROTECTED	CF	293	3	7	8	300	94	978	256	256	1094	731	277
	DRise	393	353	271	213	488	130	0	0	0	0	0	0
	GT	928	930	435	487	388	529	0	0	0	0	0	0
	LCF	1468	337	693	576	198	1543	425	254	254	577	404	137
	LF	498	1398	1386	2198	1940	1036	12	15.5	15	60	48	35
	Marsh	214	353	178	577	200	548	0	0	0	0	0	0
	Sand	110	72	33	417	609	18	0	0	0	0	0	0
	SD	1011	1662	2379	431	3388	3268	0	1.8	2	23	16	0.4
	SDD	747	1492	1339	2349	193	579	0	9	9	16	69	3
	Waterway	645	681	626	868	1727	801	0	0	0	0	0	0
UNPROTECTED	CF		1268	973	213	780	91		331	181	784	864	277*
	DRise		-	1268	1621	1646	1540		-	0	0	0	0
	LCF		0.0	-	719	16	452		245	-	700	304	122
	Marsh		66	36	65	-	-		0	0	0	-	0
	SD/SDD		0.0	-	0.0	0.0	0		19	-	17	10	0
	SD/SDD		20310	19297	20079	20089	20012		6	6	26	19	0.7
	Waterway	N/A	132	92	110	-	-	N/A	0	0	0	-	-

Table 5. Population estimates for *Chloropyron maritimum* spp. *palustre* by habitat in protected and unprotected areas at North Spit. The unprotected area was not mapped in 2011.

		CHMAPA					
Habitat Code		2011	2012	2013	2014	2015	2016
PROTECTED	CF	286554	768	1675	8314	219429	25998
	DRise		0	0	0	0	0
	GT		0	0	0	3725	0
	LCF	623900	85598	175995	320206	79992	211329
	LF	5976	21674	20291	132019	92207	36664
	Marsh		0	0	0	0	0
	Sand		0	0	0	0	0
	SD		2955	4229	9968	53643	1472
	SDD		13428	12047	37589	13381	1654
	Waterway		0	0	0	0	0
<hr/>							
UNPROTECTED	CF	-	419285	176354	166678	673920	25207
	DRise	-	0	0	0	0	0
	GT	-	0	0	0	0	0
	LCF	-	0	0	503150	4864	54963
	LF	-	0	0	0	0	0
	Marsh	-	0	0	0	0	0
	Sand	-	0	0	0	0	0
	SD	-	0	0	0	0	0
	SDD	-	126373	120069	333620	374995	13529
	Waterway	-	0	0	0	0	0
<b>Protected Area Estimate</b>	<b>916430</b>	<b>124423</b>	<b>214238</b>	<b>508096</b>	<b>462377</b>	<b>277118</b>	
<b>Unprotected Area Estimate</b>		<b>545659</b>	<b>296422</b>	<b>1003448</b>	<b>1053779</b>	<b>93699</b>	
<b>TOTAL</b>		<b>670081</b>	<b>510660</b>	<b>1511544</b>	<b>1516156</b>	<b>370816</b>	



### **Limonium californicum**

In 2014 monitoring plots were also assessed for *L. californicum*. Over the course of this study, it was noted that the cover of *L. californicum* was increasing in both the protected and unprotected areas (Table 6, Table 7). Increased monitoring efforts allowed us to make population estimates using the same methodology employed for *C. maritimum* ssp. *palustre*; by calculating the average number of *L. californicum* plants in each mapped habitat class and scaling based on the area occupied by each habitat class. In 2014, the estimated population size of *L. californicum* in the unprotected area was 130,210 and in 2015 decreased to 47,678. This decrease was noted in all size classes (reproductive, vegetative and seedlings; (Table 6). In 2016, the population of *L. californicum* increased to 120,702. In the protected area, the population was estimated to be 832,518 in 2014 and has decreased in 2016 to 531,999 (Table 7).

Table 6. Areal cover of each habitat type, and number of *Limonium californicum* seedlings, vegetative and reproductive plants per m<sup>2</sup> in the unprotected and protected areas at North Spit in 2014-2016.

	Habitat Code	seedlings/m <sup>2</sup>			veg/m <sup>2</sup>			repro/m <sup>2</sup>			Total LICA/m <sup>2</sup>		
		2014	2015	2016*	2014	2015	2016	2014	2015	2016	2014	2015	2016
PROTECTED	CF	10	3.6	-	56	62.8	56	13	10.1	5.3	79	76.4	61.3
	D-rise	0		-	37.3		0	21.3	0	0	58.7	0	0
	GT	6.4	6.4	-	0	44.8	0	0	16	0	6.4	67.2	0
	LCF	4.8	0.6	-	128	117.1	84.5	39.9	17.7	60.8	172.6	135.4	145.3
	LF	15.8	1.2	-	207.1	268.1	115.5	92.5	39.7	131.7	315.4	308.9	247.2
	SD	3	0.2	-	6.2	16	10	1.8	2.6	1.9	11	18.7	11.8
	SDD	0	0	-	4.7	21.3	8	3.3	8	4.7	8	29.3	12.7
						0							
UNPROTECTED	CF	2.9	0	-	8.7	16	0	4.4	0	16	16	16	16
	D-rise	0	0	-	1.5	0	0	0	0	0	1.5	0	0
	LCF	8	0	-	76	16	114.7	56	16	0	140	32	184
	Marsh		0	-		0	0	0	0	69.3		0	0
	SD	0	0	-	1.2	1.5	2.4	0	0.2	0.9	1.2	1.7	3.3
	SDD	0.2	0	-	4.6	0	1.4	0.7	0	0.5	5.5	0	1.8

\*No seedlings were noted in 2016 in the monitored plots.

Table 7. Population estimates for *Limonium californicum* by habitat in protected and unprotected areas at North Spit. Areal cover of each habitat type by year are listed in Table 4.

		LICA		
Habitat Code		2014	2015	2016
PROTECTED	CF	593	22933	5765
	DRise	12496	0	0
	GT	3123	26006	0
	LCF	99608	26815	224167
	LF	693166	598898	256085
	Marsh	0	0	0
	Sand	0	0	0
	SD	4740	63435	38648
	SDD	18792	5661	7334
	Waterway	0	0	0
-----				
UNPROTECTED	CF	3392	12480	1456
	DRise	2358	0	0
	GT	0	0	0
	LCF	100660	512	83168
	LF	0	0	0
	Marsh	0	0	0
	Sand	0	0	0
	SD	23800	34686	36078
	SDD	0	0	0
	Waterway	0	0	0
<b>Protected Area Estimate</b>		<b>832518</b>	<b>743748</b>	<b>531999</b>
<b>Unprotected Area Estimate</b>		<b>130210</b>	<b>47678</b>	<b>120702</b>
<b>TOTAL</b>		<b>962728</b>	<b>791426</b>	<b>652701</b>

## Community Analysis

The NMS ordination of sample units in species space (Figure 7) in the protected habitat (2010-2016) resulted in a 3-dimensional stable solution (final stress = 12, final instability = 0.0000). A randomization test confirmed that final stress was lower than expected by chance ( $p = 0.008$ ). Sample units from all years tended to be intermixed in species space. Axis 1 explained 68% of the variability with Axis 2 explaining 15%. *Chloropyron maritimum* ssp. *palustre* (COMAPA) was strongly negatively correlated with Axis 1 ( $r = -0.44$ ), along with natives *L. californicum* (LICA;  $r = -0.9$ ), *Plantago maritima* (PLMA;  $r = -0.51$ ), and *J. carnososa* (JACA;  $r = -0.41$ ). *S. depressa* (SADE) had a strong positive correlation with Axis 1 ( $r = 0.90$ ), along with *Distichlis spicata* (DISP;  $r = 0.30$ ). The distribution of these species suggests that they do not co-occur with many others in the plant community at this site. Litter was negatively associated with Axis 2 ( $r = -0.42$ ), along with *Spergularia macrantha* (SPMA;  $r = -0.42$ ), *D. spicata* ( $r = -0.40$ ), and *C. album* ( $-0.29$ ). Ordination scores were similar to those in recent years, suggesting that these species associations remain over time, but can shift slightly (Figure 7). *Chloropyron maritimum* ssp. *palustre* continued to be associated with species such as *L. californicum* and *J. carnososa* which are known as potential host plants for the hemiparasite. These trends are similar to those observed in previous years. *S. depressa* and *D. spicata* were associated with each other but few other species, indicating that these species do not co-exist with *C. maritimum* ssp. *palustre* or others that are prevalent in the community.

Protected and unprotected habitats differed significantly in community composition in 2016 (MRPP;  $A = 0.15$ ,  $P < 0.0000$ ) and tended to separate in species space (NMS ordination, 2 dimensional solution, final stress=13.9, instability=0.0000; Figure 8). Species richness was greater in protected habitat than in unprotected habitat (17 and 11, respectively). Many species were identified as indicators of the protected habitat while only two were identified as indicators of the unprotected habitat (Figure 8). *C. maritimum* ssp. *palustre* was an indicator of the protected area ( $p < 0.01$ ) in 2016. Indicators of the protected area also included *Cuscuta pacifica*, *C. album*, *J. carnososa*, *L. californicum*, *P. maritima*, and *S. macrotheca*. Similar to previous years, the only indicator species of the unprotected habitat were *D. spicata* and *S. depressa*. *C. maritimum* ssp. *palustre* occurred in both habitats, but had higher average cover in the protected area than in the unprotected (3.8% and 0.3%, respectively). Cover declined from 2013 and 2014 values for both the protected and unprotected areas. *L. californicum* occurred in both habitats, but was much more prevalent in the protected area than in the unprotected area (37.6% and 1.5%, respectively). While there was a slight increase in the protected area from previous years, cover of *L. californicum* in the unprotected area remains similar year to year. The stark difference in cover of *L. californicum* in the protected vs. unprotected habitats could suggest that it does not tolerate disturbance as well as other species in the community, such as *D. spicata* or *S. depressa*. Cover of *C. maritimum* ssp. *palustre* has declined in recent years and could be associated with the increase in cover of *L. californicum*, particularly in the protected area.

*C. maritimum* ssp. *palustre* had patchy abundance within the unprotected area, however, these patches have remained in the similar geographic location within the unprotected area throughout the years (Figure 11). These results were consistent with the percentage of transects located in specific habitat classes; protected habitats had greater composition of *Limonium* flat than unprotected habitats in 2016 (Figure 9). Likewise, transects in the unprotected habitat had greater percentages of *Salicornia* depression and *Salicornia-Distichlis* depression than in protected habitats (Figure 9).

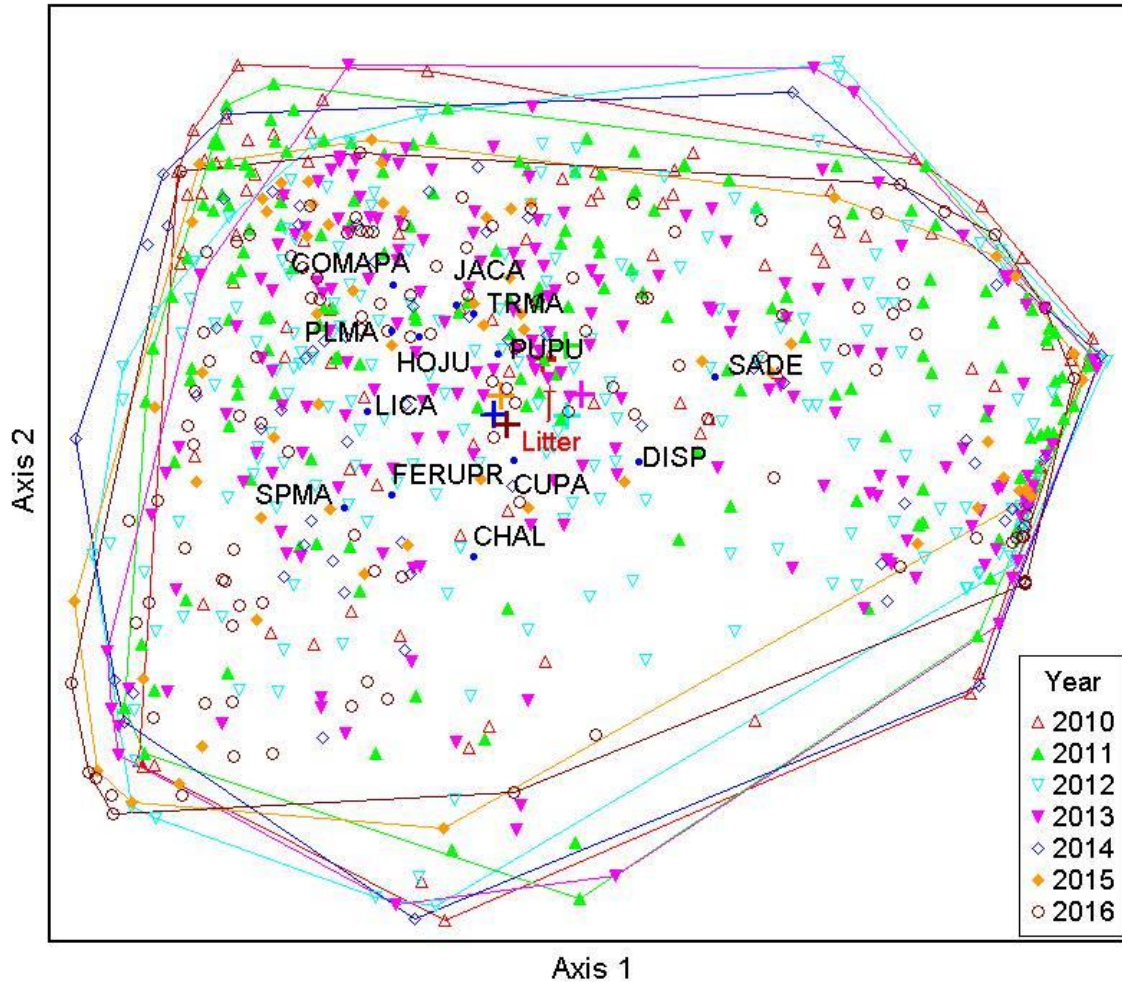


Figure 7. NMS ordination of community composition within the protected area of the *Chloropyron maritimum* ssp. *palustre* population at the Coos Bay North Spit (2010-2016). Triangles represent sample units (quadrats along transects) in species space, and distance between points indicates similarity of community composition by quadrat. Polygons outline the extent of all of the sample units. Blue dots and species abbreviations (Table 7) indicate the centroid for species locations.

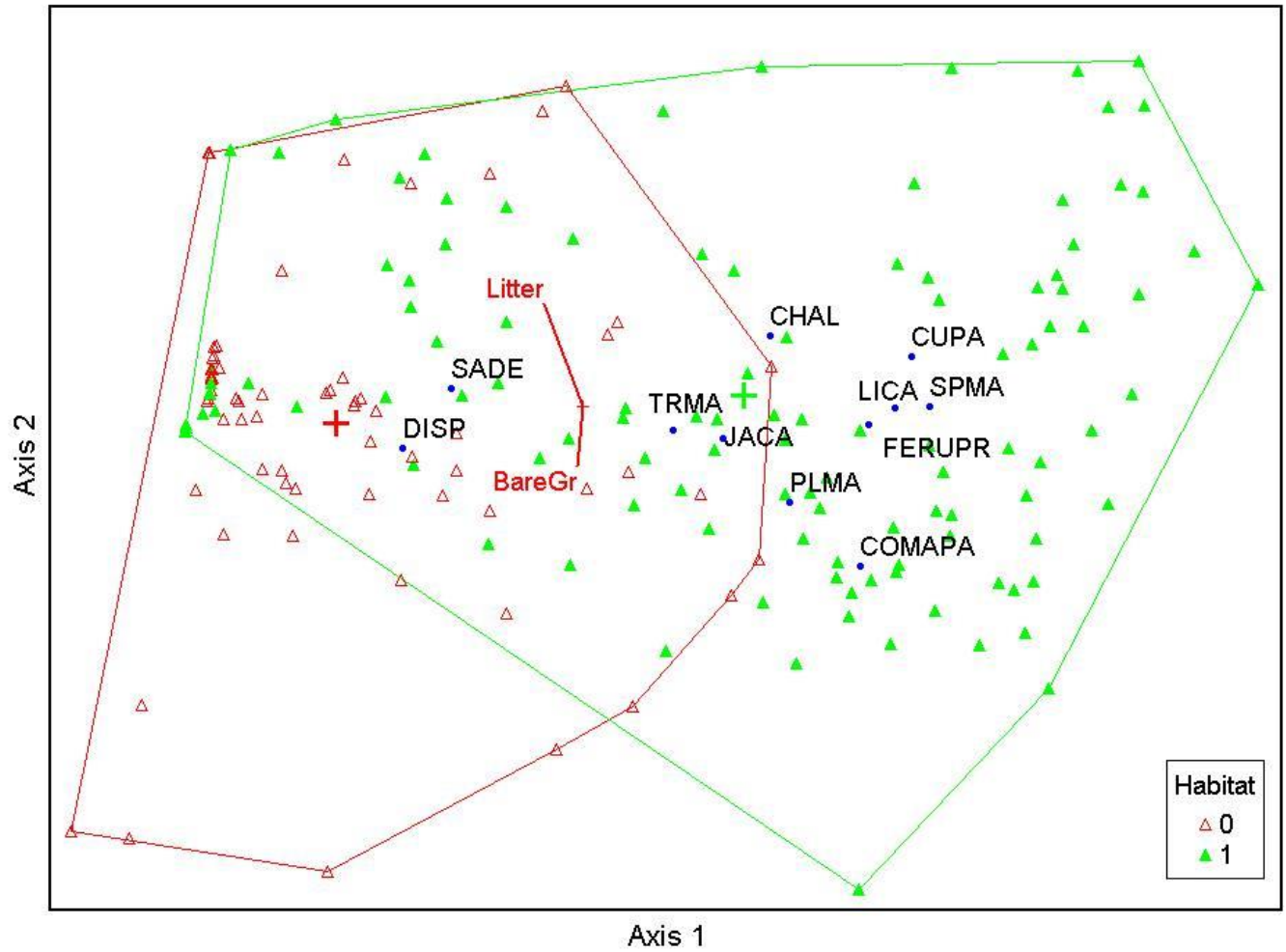


Figure 8. NMS ordination of community composition within the protected and unprotected habitat types (2016). 0=unprotected and 1=protected habitat types. Triangles represent sample units (quadrats along transects) in species space, and distance between points indicates similarity of community composition by quadrat. Polygons outline the extent of all of the sample units. Blue dots and species abbreviations (Table 7) indicate the centroid for species locations.

Table 8. Species list including nativity from plots within the *Chloropyron maritimum* ssp. *palustre* population at the Coos Bay North Spit in 2016. Species codes are from the USDA PLANTS database (USDA NRCS 2012). Species included in the indicator species analysis noted Indicator Species column, 'Habitat' refers to the area they indicate and 'P value' is associated with the indicator value for that species. \* indicates species that occurred in less than 5% of the sample units and were not included in the Indicator Species Analysis.

Species	Code	Nativity	Indicator species?	Habitat	P value
<i>Ammophila arenaria</i>	AMAR	Exotic	*		
<i>Cerastium glomeratum</i>	CEGL	Exotic	*		
<i>Cakile edentula</i>	CAED	Native	*		
<b><i>Chenopodium album</i></b>	<b>CHAL</b>	<b>Exotic</b>	<b>Y</b>	<b>Protected</b>	<b>0.001</b>
<b><i>Chloropyron maritimum</i> ssp. <i>palustre</i></b>	<b>COMAPA</b>	<b>Native</b>	<b>Y</b>	<b>Protected</b>	<b>0.0004</b>
<b><i>Cuscuta pacifica</i></b>	<b>CUPA</b>	<b>Native</b>	<b>Y</b>	<b>Protected</b>	<b>0.0002</b>
<b><i>Distichlis spicata</i></b>	<b>DISP</b>	<b>Native</b>	<b>Y</b>	<b>Unprotected</b>	<b>0.0002</b>
<b><i>Festuca rubra</i> ssp. <i>littoralis</i></b>	<b>FERUPR</b>	<b>Native</b>	<b>Y</b>	<b>Protected</b>	<b>0.02</b>
<i>Grindelia stricta</i>	GRST	Native	*		
<i>Holcus lanatus</i>	HOLA	Exotic	*		
<i>Hordeum jubatum</i>	HOJU	Native	*		
<b><i>Jaumea carnosa</i></b>	<b>JACA</b>	<b>Native</b>	<b>Y</b>	<b>Protected</b>	<b>0.0002</b>
<i>Juncus</i> sp.	Juncus	Native	*		
<i>Leymus mollis</i>	LEMO	Native	*		
<b><i>Limonium californicum</i></b>	<b>LICA</b>	<b>Native</b>	<b>Y</b>	<b>Protected</b>	<b>0.0002</b>
<b><i>Plantago maritima</i></b>	<b>PLMA</b>	<b>Native</b>	<b>Y</b>	<b>Protected</b>	<b>0.0002</b>
<i>Puccinellia pumila</i>	PUPU	Native	*		
<i>Rumex acetosella</i>	RUAC	Exotic	*		
<b><i>Salicornia depressa</i></b>	<b>SADE</b>	<b>Native</b>	<b>Y</b>	<b>Unprotected</b>	<b>0.0002</b>
<b><i>Spergularia macrotheca</i></b>	<b>SPMA</b>	<b>Native</b>	<b>Y</b>	<b>Protected</b>	<b>0.0002</b>
<i>Triglochin maritima</i>	TRMA	Native	N		

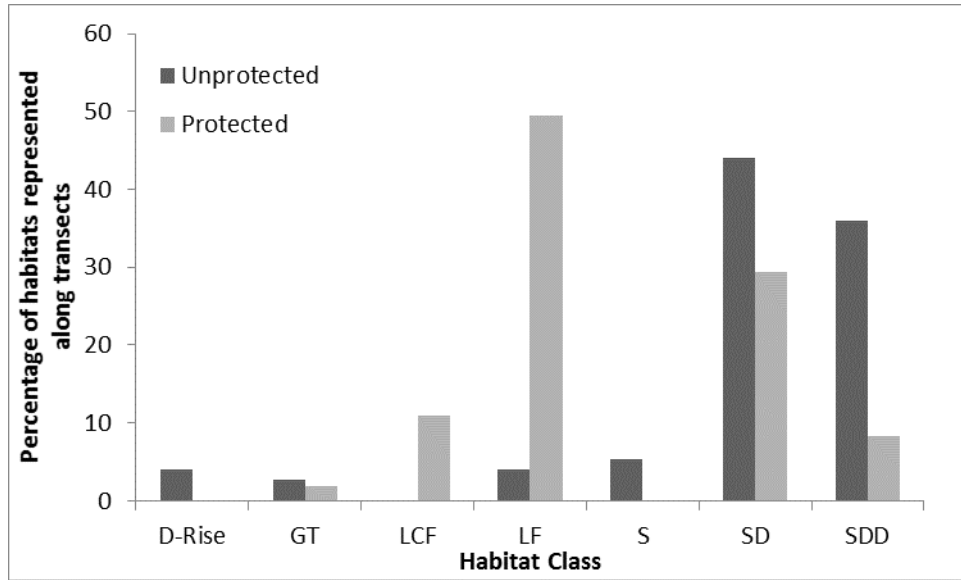


Figure 9. Percent of habitat classes represented along transects in both protected and unprotected habitats in 2016. Habitat classes correspond to Table 3.



## Habitat Mapping

In 2011-2016 a habitat map was created using the habitat classes listed in Table 3 (Figure 10, Figure 11). The map has been updated annually to detect shifts in habitat type that may affect the success of *C. maritimum* ssp. *palustre* and *L. californicum*. In both the areas, the density of *C. maritimum* ssp. *palustre* has fluctuated annually, (range 181-1064 plants/m<sup>2</sup>), however in each year, the changes in density have been consistent between protected and unprotected areas. For example, in years where density of *C. maritimum* ssp. *palustre* was low in CF habitats in the protected area, the density was also low in the unprotected area (Figure 6, Table 4). In 2014-2016, in the protected area, the density of *L. californicum* was consistently higher than in the unprotected area, in CF and LCF habitat types (Table 6).

### Protected Area

In 2011, we surveyed ~7,000m<sup>2</sup> of occupied habitat in the protected area, with 293 m<sup>2</sup> mapped as “*Chloropyron* Flat” (CF) and 1,468 m<sup>2</sup> *Limonium-Chloropyron* Flat (LCF). In 2012, there were changes in cover of all habitats associated with *C. maritimum* ssp. *palustre*; CF cover decreased to only 3m<sup>2</sup>, and the cover of LF increased considerably from 498m<sup>2</sup> in 2011 to 1398 m<sup>2</sup> in 2012. From 2011-2012, there were also increases in both the “*Salicornia* Depressions” (SD) and “*Salicornia-Distichlis* Depressions” (SDD) cover. In 2013 and 2014, this trend continued with a shift towards *Limonium* dominated plant communities and lower cover of *C. maritimum* ssp. *palustre*. In 2015, the cover of CF habitat increased, with a concomitant decrease in *L. californicum* dominated habitat types. In 2016, cover of CF habitat remained relatively high, with 94m<sup>2</sup> of cover. From 2011-2016 the relative cover of each of the habitat types occupied by the sensitive species (CF, LCF and LF) has varied from being *C. maritimum* ssp. *palustre* dominant to *L. californicum* dominant, although the total cover of occupied habitat types has remained relatively stable at ~2,500 m<sup>2</sup> collectively in the protected area.

### Unprotected Area

In 2012, the habitat in the southern, disturbed portion of the area was also mapped using the same habitat classifications. Because the southern area is so much larger than the protected area, (~22,000 m<sup>2</sup> compared to ~7,200 m<sup>2</sup>), the habitat mapping in the unprotected area is at a much coarser resolution than that in the protected area. In the southern unprotected area the dominant habitat class is SDD with *Distichlis spicata* co-occurring with *Salicornia* in more than 90% of the habitat. “*Chloropyron* Flats” were the next most common habitat type covering approximately 1,200 m<sup>2</sup> in 2012 and ~1,000m<sup>2</sup> in 2013. The cover of CF habitat has continued to decrease since that time, and in 2016, cover of CF habitat was only 91m<sup>2</sup>, very similar to the 94m<sup>2</sup> in the protected area. Cover of LCF has increased since mapping began, and in 2016 450m<sup>2</sup> of LCF was mapped in the unprotected area. In addition to habitat classes, the boundaries of the disturbed area were marked in 2012-2016 and overlaid onto the habitat map (Figure 11).

## CONCLUSIONS

There was high variability in the number *Chloropyron* from 2010-2016, with population estimates ranging from a low of ~124,000 in 2012 to ~916,000 in 2011, in the protected area. In the unprotected area, the population has ranged from a low of just ~93,000 in 2016 to a high of just over 1,000,000 in 2014 and 2015. Vegetation removal experiments did not elucidate any potential effects of competitors on

*Chloropyron* growth. As this species is a hemi-parasite and known to be associated with higher cover of select species, it is not surprising that we did not find a positive effect of our vegetation treatment. While it is known that the species is a hemi-parasite, with limited host specificity, it is unknown which adjacent plant species are being parasitized by *Chloropyron*.

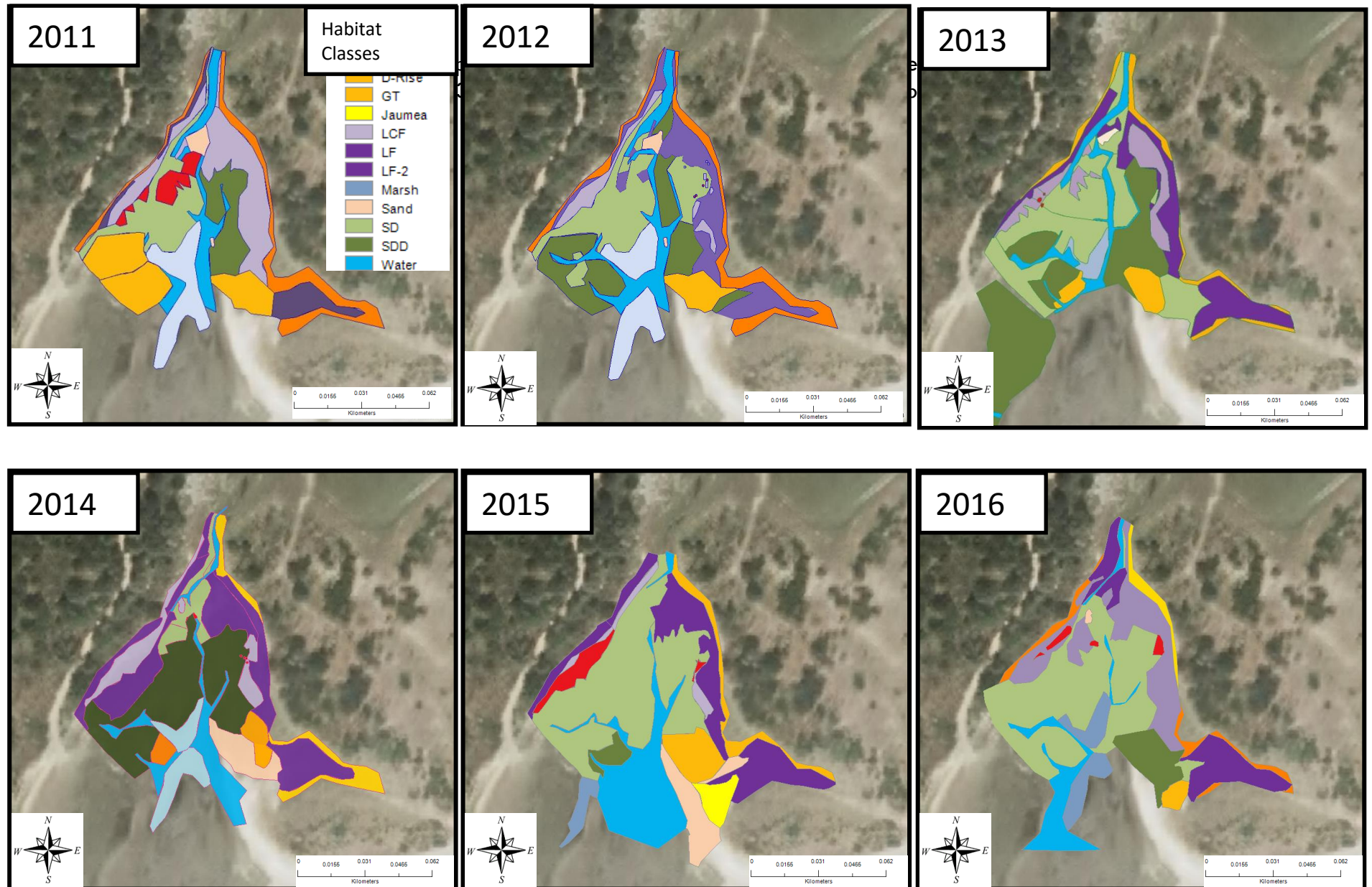
Populations estimates of *Limonium californicum* calculated from 2014-2016 indicate that the population is stable (but relatively smaller) in the unprotected area, and has been decreasing in the protected area. In the protected area, the population has decreased from a high of ~832,000 in 2014 to ~532,000 in 2016. In the unprotected area, the population of *L. californicum* had a low of ~47,000 in 2015 and 120,000 in 2016. This apparent decrease in the number of plants in the protected area, may reflect the increasing size of long lived plants, as the areal cover of the species has increased over the course of the study.

From 2011-2016 there were fluctuations in the cover of different habitat classes in the protected area; particularly in the cover of habitat types associated with *Limonium californicum*. It is likely that this perennial plant is benefitting from the lack of disturbance in the protected area. Very little *L. californicum* was found in the unprotected area, and rarely enough to classify the habitat as “LCF” or “LF” at the scale mapped. Additionally, it was noted that the *C. maritimum* ssp. *palustre* was commonly associated with the disturbed areas in the unprotected area, and patches were found in the same locations across years (Figure 11). Continued habitat mapping and population surveys will elucidate general population trends of these two bureau sensitive species, which will allow for more targeted management recommendations to be made.

## RECOMMENDATIONS

It is recommended that transects in both the protected and unprotected area continue to be monitored into the future on at least a three year cycle unless natural or manmade activities could cause substantial changes in microtopography or local sea-level. We also recommend continued (and coincident) data collection be continued on the Bureau Sensitive *Limonium californicum* in the area. The presence of *C. maritimum* ssp. *palustre* in the disturbed portion of the unprotected area, and the increasing dominance of *L. californicum* in the protected area indicates that further work may be necessary to balance the needs of both species.

Future work on the species may include further investigation and characterization of the parasitic relationship between *C. maritimum* ssp. *palustre* and its hosts; identification of pollinators (of both sensitive species) as well as microtopographical effects on the presence, abundance and establishment of both species. Future work can also begin to examine potential causes for changes in the cover of habitat classes over our study period. In the protected area, we have seen a dramatic shift towards increasing cover of *Limonium californicum*, in the protected area, whereas little to none is found in the unprotected area. Comparing the observed changes against local climate factors, land-uses changes, or other physical factors including both local and global sea level changes could potentially provide valuable information for management of these populations into the future.



*Chloropyron maritimum* ssp. *palustre* and *Limonium californicum* 2016



Figure 11. 2013-2016 habitat maps for unprotected area. The remaining 'vegetated' area is classified as either SD or SDD based on habitat classes described in Table 3. Note that while the presence of *C. maritimum* ssp. *palustre* is quite patchy in this area, the location and extent of these patches have remained relatively stable over the course of this study.

## LITERATURE CITED

- Chuang, T.I., and L.R. Heckard. 1971. Observation on root-parasitism in *Cordylanthus* (Scrophulariaceae). *American Journal of Botany* 58:218-228.
- Chuang, T.I., and L.R. Heckard. 1971. Seed coat morphology in *Cordylanthus* (Scrophulariaceae). *American Journal of Botany* 59:258-265.
- Chuang, T.I., and L.R. Heckard. 1973. Taxonomy of *Cordylanthus* subgenus *Hemistegia* (Scrophulariaceae). *Brittonia* 25:135-158.
- Brian, N. 2002. Status Report: *Cordylanthus maritimus* Bentham spp. *palustris* (Behr) Chuang & Heckard (Point Reyes bird's beak). Umpqua Field Office, Coos Bay District Office, Bureau of Land Management.
- Eastman, D.C. 1990. Rare and endangered plants of Oregon. Beautiful America Publishing Company, Wilsonville, Oregon. p. 53.
- Franklin, J.F., and D.T. Dyrness. 1973. Natural vegetation of Oregon and Washington. USDA Forest Service General Technical Report PNW-8. U.S. Forest Service, Portland, Oregon. 417 pp.
- Fink, B., and J. Zedler. 1990a. Maximizing growth of *Cordylanthus maritimus* spp. *maritimus*, an endangered salt marsh plant. Final report for the California Department of Transportation. Interagency Agreement #11B351.26.
- Fink, B., and J. Zedler. 1990b. Endangered plant recovery: experimental approaches with *Cordylanthus maritimus* spp. *maritimus*. Proceedings of the Society for Ecological Restoration and Management. 460-468.
- Hickman, J.C., Editor. 1993. The Jepson Manual: The Higher Plants of California. University of California Press, Berkeley California.
- Kaye, T. 1991. Population monitoring and habitat analysis for salt marsh bird's beak, *Cordylanthus maritimus* ssp. *palustris*. Cooperative Challenge Cost Share Project jointly funded by BLM and Oregon Department of Agriculture. Unpub. report on file at ODA.
- Kaye, T., B. Meinke, S. Massey, and R. Frenkel. 1991. *Cordylanthus maritimus* ssp. *palustris* inventory and habitat analysis. Cooperative Challenge Cost Share Project jointly funded by BLM and Oregon Department of Agriculture, 90-2. Unpub. report on file at ODA.
- Kaye, T. 1992. Population monitoring and habitat analysis for salt marsh bird's beak, *Cordylanthus maritimus* ssp. *palustris*. Second year summary. Cooperative Challenge Cost Share Project jointly funded by BLM and Oregon Department of Agriculture. Unpub. report on file at ODA.
- Kruskal, J. B. 1964. Nonmetric multidimensional scaling: a numerical method. *Psychometrika* 29: 115-129.

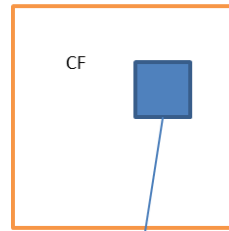
- Lincoln, P.G. 1985. Pollinator effectiveness and ecology of seed set in *Cordylanthus maritimus* ssp. *maritimus* at Point Mugu, California. Final report to U.S. Fish and Wildlife Service, Sacramento, California. No. 10181-9750.
- McCune, B. and J. B. Grace. 2002. Analysis of Ecological Communities, 2<sup>nd</sup> Printing. Gleneden Beach, Oregon, U.S.A.: MjM Software Design. 300 p.
- McCune, B. and M. J. Mefford. 2011. PC-ORD. Multivariate Analysis of Ecological Data. Version 6.0. MjM Software, Gleneden Beach, Oregon, U.S.A.
- Mielke, P. W., Jr. and K. J. Berry. 2001. Permutation Methods: a Distance Function Approach. Springer Series in Statistics. Springer Science + Business Media, New York.
- Newman, J. 1981. Aspects of *Cordylanthus maritimus* ssp. *maritimus* germination tests examined. Notes on studies performed at Pacific Missile Test Center, Naval Air Station, Poin Mugu, California.
- USDA NRCS. 2012. The PLANTS Database (<http://plants.usda.gov>, 22 March 2012). National Plant Data Team, Greensboro, NC 27401-4901 USA.
- Weins, D. 1984. Ovule survivorship, brood size, life history, breeding systems, and reproductive fitness in plants. *Oecologia* 64:47-53.

APPENDIX A. SAMPLING METHODOLOGY FOR *C. MARITIMUM* SSP. *PALUSTRE* AND *L. CALIFORNICUM*.

COMAPA/LICA Sub-sampling

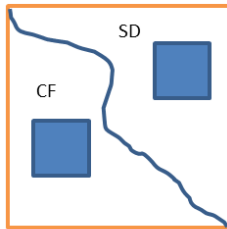
Transects are 20 m long  
 Sampled on the RIGHT side when  
 looking from the origin to the end  
 post.

- In each 1m<sup>2</sup> you will assign a habitat class (See table on next page).
- In each 1m<sup>2</sup> a 25 cm x 25 cm square will be subsampled for COMAPA and LICA . (Use the list of random coordinates to place the sub-sample frame.)
  - COMAPA- count number of individuals, branches and flowers.
  - LICA- count number of vegetative and reproductive rosettes

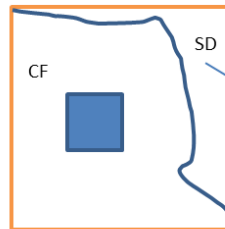


Subsample for COMAPA/LICA is placed using list of random coordinates.

- If there is more than one habitat class....



- (Example A) Two habitat types are present. Each area is large enough to accommodate the subsample frame.
- Do two subsamples. Use the random coordinates to guide your plot placement in BOTH habitat types. Skip coordinates that would place the frame in more than one habitat type.



Do not subsample in areas that cannot accommodate the sampling frame.

- (Example B) Two habitats are present, but only one area is large enough to accommodate the subsample frame.
- Do one subsample. In this example, the SD habitat can not accommodate the subsample frame, thus this portion is not subsampled.

<b>Code</b>	<b>Habitat</b>	<b>Description</b>
<b>CF</b>	Chloropyron flat	Chloropyron cover $\geq$ 50%
<b>LCF</b>	Limonium-Chloropyron flat	Limonium, Chloropyron codominant
<b>LF</b>	Limonium flat	Limonium cover $\geq$ 50%
<b>GT</b>	Grass transition	Differentiated by presence of <i>Ammophila</i> or <i>Leymus</i> , marks transition into small stabilized dune habitat. Some Chloropyron present but only in trace amounts. This is the absolute upper boundary of COMAPA habitat.
<b>SD</b>	Salicornia depression	Salicornia dominant species; area of higher water during the tide. Differs from waterway by abundant Salicornia, and little to no bare sand.
<b>SDD</b>	Salicornia-Distichlis depression	Salicornia dominant, but <i>Distichlis</i> cover $\geq$ 25%
<b>Sand</b>	Sand	Highest reach of the tide, but water does not linger here for long. Some COMAPA in trace amounts.
<b>Waterway</b>	Waterway	Other plants may be here, but not appropriate habitat for COMAPA. Various courses throughout entire area, usually adjacent to SD, SDD.
<b>D-Rise</b>	<i>Distichlis</i> rise	Small hill, <i>Distichlis</i> dominated, with minor patches of <i>Jaumea carnosa</i> nearest to the ocean.
<b>Marsh</b>	Marshy area	Marshy area dominated by <i>Scirpus</i> sp., area inundated by tides.



2015 COMAPA/LICA transect orientation (not to scale, for reference only)  
Always monitor on the RIGHT side of the transect

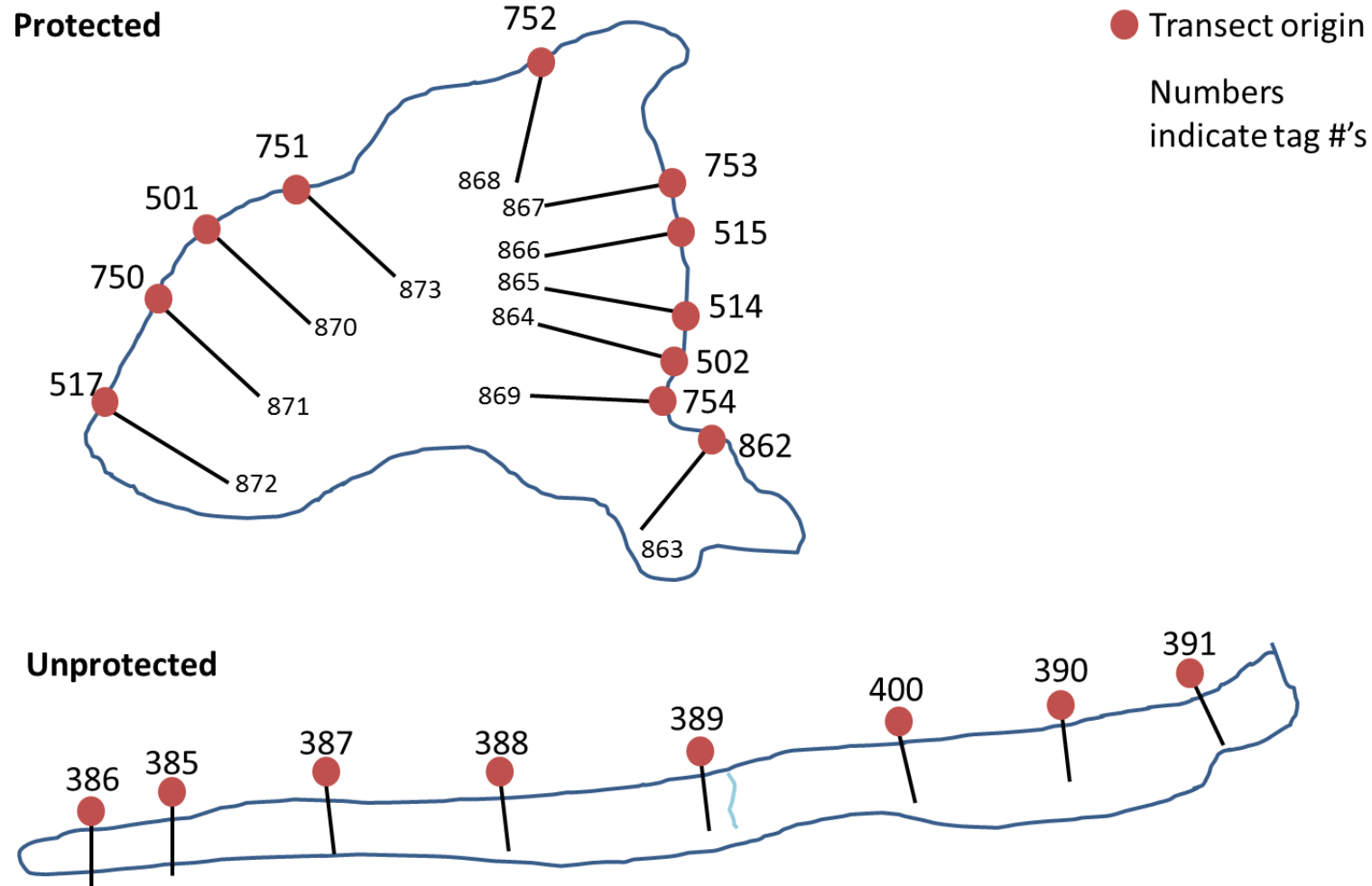


Figure 12. Schematic diagram (not to scale) of transects in both the protected and unprotected areas as of 2015.

COMAPA species ID cheatsheet

*Ammophila arenaria*-  
European beachgrass



*Festuca rubra*



*Limonium californicum*



*Chenopodium album*



*Hordeum jubatum*



*Plantago maritima*



*Cuscuta pacifica* on  
*Salicornia depressa*



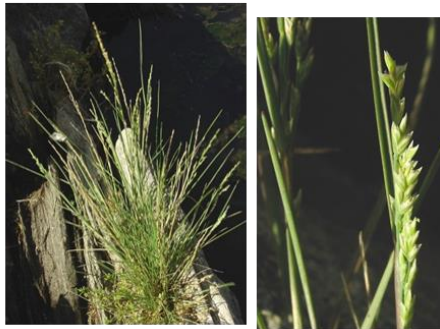
*Jaumea carnosa*



*Leymus mollis*-  
American dunegrass



*Puccinellia pumila*



*Distichlis spicata*



*Spergularia macrotheca*



*Triglochin maritima*

